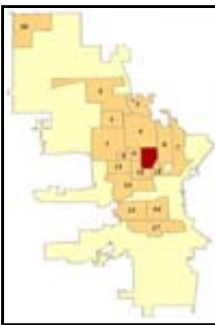


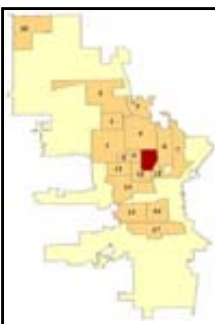
**City of Milwaukee  
Neighborhood Strategic Planning (NSP)  
WAICO/YMCA**

Statistical Category	NSP Number 10		City of Milwaukee	
	Number	Percent	Number	Percent
<b>DEMOGRAPHICS</b>				
<b>Total population</b>	<b>8,684</b>		<b>596,974</b>	
Area (Square miles)	1.011		96.635	1.05%
Persons per Square mile	8,588		6,178	
Population Change 1990-2000	-5,133		-19,636	
<b>Population by Race</b>				
<b>Reporting one race, not Hispanic</b>				
White alone	157	1.81%	270,989	45.39%
Black alone	8,199	94.42%	220,432	36.92%
American Indian and Alaska Native alone	12	0.14%	4,313	0.72%
Asian alone	46	0.53%	17,339	2.9%
Native Hawaiian and other Pacific Islander alone	0	0%	222	0.04%
Other race alone	3	0.03%	978	0.16%
Reporting two or more races, not Hispanic	99	1.14%	11,055	1.85%
Reporting any race, Hispanic	168	1.93%	71,646	12%
Minority Population	8,527	98.19%	325,985	54.61%
<b>Population by Age</b>				
Under 5 years	971	11.18%	47,545	7.96%
5 to 17 years	2,677	30.83%	123,439	20.68%
18 to 24 years	860	9.9%	72,849	12.2%
25 to 44 years	2,095	24.12%	180,243	30.19%
45 to 64 years	1,252	14.42%	107,775	18.05%
65 years or older	829	9.55%	65,123	10.91%
<b>Population by Gender</b>				
Male	3,919	45.13%	285,363	47.8%
Female	4,765	54.87%	311,611	52.2%
<b>Households</b>				
<b>Total Households</b>	<b>2,777</b>		<b>232,188</b>	
Children with two parents	1,151	41.45%	70,898	30.53%
Children with one parent	950	34.21%	37,606	16.2%
Average household size	2.62		2.65	



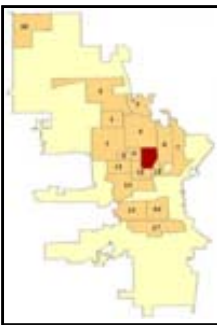
**City of Milwaukee  
Neighborhood Strategic Planning (NSP)  
WAICO/YMCA**

Statistical Category	NSP Number 10		City of Milwaukee	
	Number	Percent	Number	Percent
<b>HOUSING AND COMMUNITY DEVELOPMENT</b>				
<b>Total Properties</b>	<b>2,565</b>		<b>158,501</b>	
Average Assessed Residential Value	\$48,392		\$133,315	
Tax Delinquent Residential Properties	254	9.9%	7,220	4.56%
Open Permits Properties	193	7.52%	9,542	6.02%
Open Violations Properties	289	11.27%	8,961	5.65%
Raze Orders	16		191	
Placard Orders	74		953	
<b>New Construction (2004)</b>				
New Construction Permits	54		985	
Total Estimated Dollar Amount	\$5,572,735		\$160,433,525	
<b>Land Use</b>				
Residential	1,653	64.44%	138,623	87.46%
Owner occupy residential	874	34.07%	107,630	67.9%
Mixed: Residential & commercial	64	2.5%	2,874	1.81%
Commercial	68	2.65%	4,383	2.77%
Manufacturing	8	0.31%	1,239	0.78%
Vacant	184	7.17%	2,868	1.81%
Other	588	22.92%	8,514	5.37%
<b>Median Sale Price for Residential Properties (2005)</b>				
Single Family	\$45,000		\$126,000	
Duplex	\$56,000		\$116,900	
Multi-Family	\$104,000		\$220,000	
<b>Residential Properties Sold (2005)</b>				
Single Family	53	39.55%	6,562	60.1%
Duplex	55	41.04%	2,937	26.9%
Multi-Family	11	8.21%	662	6.06%



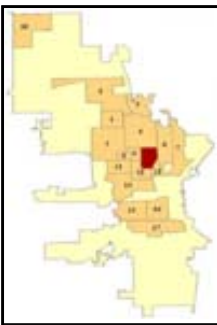
**City of Milwaukee  
Neighborhood Strategic Planning (NSP)  
WAICO/YMCA**

Statistical Category	NSP Number 10		City of Milwaukee	
	Number	Percent	Number	Percent
<b>NEIGHBORHOOD QUALITY OF LIFE</b>				
<b>Labor Force Characteristics -- Persons 16 and Older</b>				
<b>Total Labor Force</b>	<b>5,477</b>		<b>442,845</b>	
Not in labor force	2,701	49.32%	159,793	36.08%
In labor force	2,776	50.68%	283,052	63.92%
In armed forces	0	0%	229	0.05%
In civilian labor force	2,776	50.68%	282,823	63.87%
Employed	2,082	38.01%	256,244	57.86%
Unemployed	694	12.67%	26,579	6%
<b>Income</b>				
Average Household Income	\$25,316		\$40,875	
Median Household Income	\$7,375		\$32,216	
Persons below poverty	3,481	41.1%	123,664	21.35%
<b>Violations</b>				
Boardup	35		413	
Graffiti	92		8,316	
Litter	476		11,160	
Nuisance Noise	0		307	
Rodents	0		81	
Nuisance Vehicle	80		2,753	
<b>Liquor Licenses</b>				
<b>Total Liquor Licenses</b>	<b>29</b>		<b>1,403</b>	
Class A Intoxicating Liquor	0	0%	2	0.14%
Class A Liquor and Malt	5	17.24%	148	10.55%
Class A Fermented Malt Beverage	8	27.59%	164	11.69%
Class B Fermented Malt Beverage	0	0%	47	3.35%
Class B Tavern	16	55.17%	1,042	74.27%
<b>ENVIRONMENT</b>				
Combined Sewer Area	100%		47%	



**City of Milwaukee  
Neighborhood Strategic Planning (NSP)  
WAICO/YMCA**

Statistical Category	NSP Number 10		City of Milwaukee	
	Number	Percent	Number	Percent
<b>EDUCATION</b>				
Number of Schools	9		275	
<b>Educational Attainment for the Population 25 Years and Over</b>				
<b>Total Persons 25 and Older</b>	<b>4,261</b>		<b>353,305</b>	
Not high school graduate	1,913	44.9%	88,947	25.18%
High school graduate	1,324	31.07%	106,575	30.17%
Some college	660	15.49%	73,015	20.67%
Associate degree	169	3.97%	20,026	5.67%
College graduate	195	4.58%	64,742	18.32%
<b>NEIGHBORHOOD VITALITY</b>				
Community Based Organization funded by CDBG	2		88	
United Way funded Programs	0		100	
Faith Based Organizations	39		702	
Parks	9		464	
Community Learning Centers	4		42	
Safe Places	2		44	



**City of Milwaukee  
Neighborhood Strategic Planning (NSP)  
WAICO/YMCA**

Statistical Category	NSP Number 10		City of Milwaukee	
	Number	Per 1000 Residents	Number	Per 1000 Residents

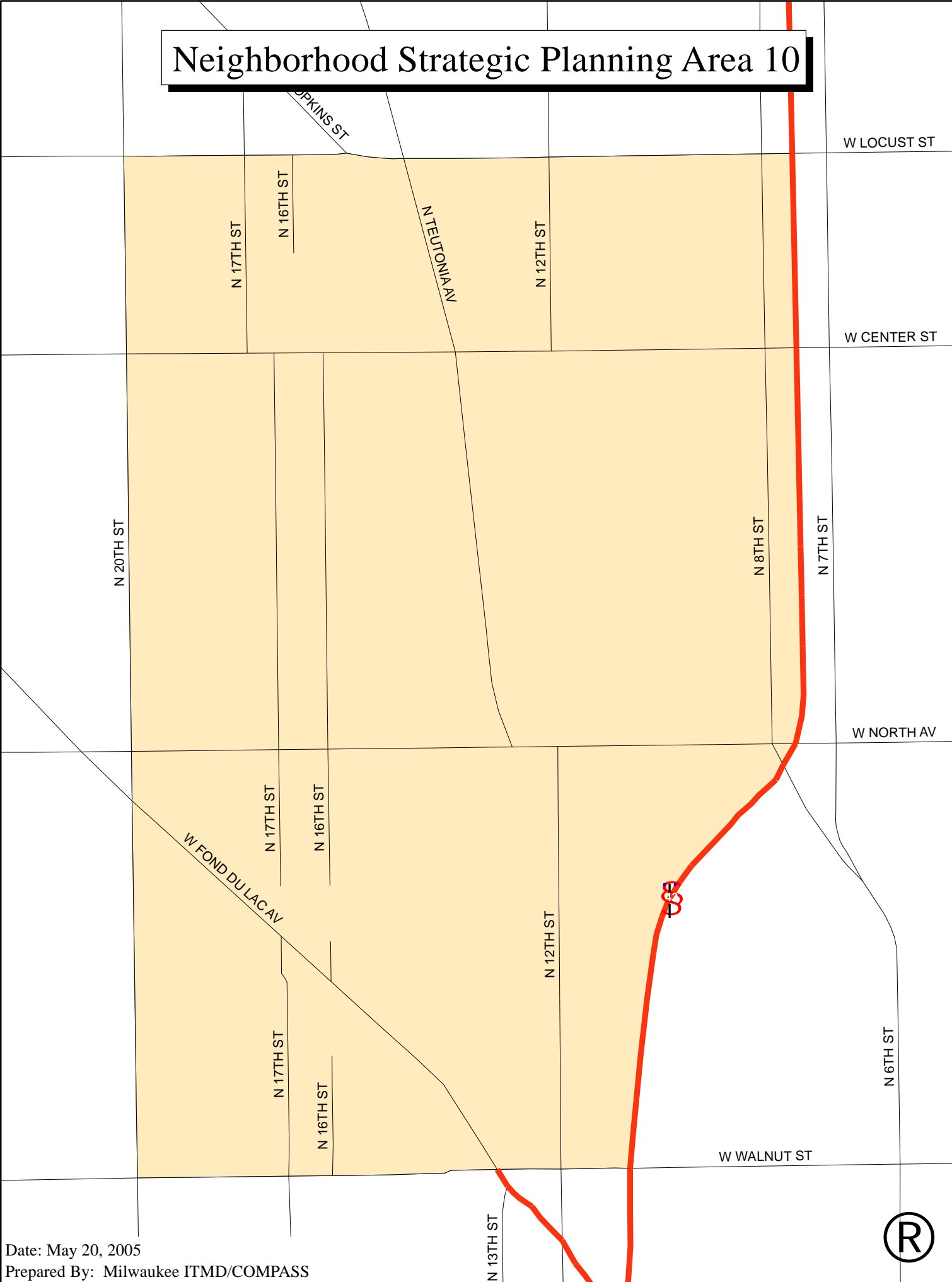
**PUBLIC SAFETY**

**Summary Information of Wisconsin Incident Based Report (WIBR) for specific group A offenses 01/01/2005 - 12/31/2005 - Milwaukee Police Department**

Total Summary WIBR for specific group A offenses	917	105.596	38,254	64.08
Aggravated Assault	108	12.437	2,573	4.31
Arson	10	1.152	242	0.405
Burglary	118	13.588	4,534	7.595
Criminal Damage	176	20.267	9,003	15.081
Homicide	8	0.921	115	0.193
Locked Vehicle	72	8.291	5,449	9.128
Sex Offenses	100	11.515	2,841	4.759
Robbery	20	2.303	579	0.97
Theft	250	28.789	10,842	18.162
Vehicle Theft	55	6.333	2,076	3.478

Prepared by: City of Milwaukee/Information and Technology Management Division/COMPASS project

# Neighborhood Strategic Planning Area 10



Date: May 20, 2005  
Prepared By: Milwaukee ITMD/COMPASS



# NEIGHBORHOOD STRATEGIC PLANNING REPORT METADATA

**Note:** where applicable % of the Neighborhood Strategic Planning (NSP) are calculated for comparison to selected nsp area Totals. If not stated specify the time frame is 2004

**General:** Analysis and Data Preparation was conducted by City of Milwaukee/Information and Management Division/COMPASS project unless otherwise specified. For more details regarding US Census Bureau data please consult their web site at <http://www.census.gov>.

## Page 1 of 5 DEMOGRAPHICS

### Total Population

**Explanation:** All people, male and female, child and adult, living in the requested nsp area. **Source:** US Census Bureau 2000 SF1

#### Area

**Explanation:** The size, in square miles for the requested nsp area. **Source:** Census Tract Map

#### Persons per Square Mile

**Explanation:** The # of inhabitants per square mile of land area. This figure is derived by dividing the total # of residents by the # of square miles of land area in the specified geographic area. **Source:** see Total Population and Area above.

#### Population Change 1990-2000

**Explanation:** Difference in total population from 1990 to 2000. **Source:** US Census Bureau 1990 & 2000 SF1

### Population by Race

**Explanation:** derived from self-identification by people according to the race or races with which they most closely identify. Minority Population is the total of all races excluding white. **Source:** US Census Bureau 2000 SF1

### Population by Age

**Explanation:** The age classification is based on the age of the person in complete years as of April 1, 2000. **Source:** US Census Bureau 2000 SF1

### Population by Gender

**Explanation:** An individual's gender classification - male or female. **Source:** US Census Bureau 2000 SF1

### Households

#### Total Households

**Explanation:** A household includes all of the people who occupy a housing unit. A housing unit is a house, an apartment, a mobile home, a group of rooms, or a single room occupied (or if vacant, intended for occupancy) as separate living quarters. **Source:** US Census Bureau 2000 SF1

#### Average Household Size

**Explanation:** A measure obtained by dividing the # of people in households by the # of households. **Source:** US Census Bureau 2000 SF1

## Page 2 of 5

## HOUSING AND COMMUNITY DEVELOPMENT

### Total Properties

#### Average Assessed Residential Value

**Explanation:** Average assessed dollar amount of all Single Family, Duplex and Multi-Family homes. **Source:** City of Milwaukee/Master Property

#### Tax Delinquent Residential Properties

**Explanation:** Total # of Single Family, Duplex and Multi-Family homes that are delinquent on Real Estate Property taxes. This includes missing payments to the installment plan but does not include Personal Property delinquent taxes. **Source:** City of Milwaukee/Master Property

#### Open Permits

**Explanation:** See the Department of City Development/Permit Center web site: <http://www.mkedcd.org/build/dcNeedPerm.html> for project types which require permits. **Source:** City of Milwaukee/Department of Neighborhood Services

#### Open Violations

**Explanation:** A violation is written on properties that violates any provision of chapters in the City Ordinances. **Source:** City of Milwaukee/Department of Neighborhood Services

#### Raze Orders

**Explanation:** A order to raze or remove a building is determined by the Department of Neighborhood commissioner as building where the cost of such repairs would exceed 50 percent of the assessed value of such building divided by the ratio of the assessed value to the recommended value as last published by the Wisconsin department of revenue for the city of Milwaukee, such repairs shall be presumed unreasonable and it shall be presumed that the building is a public nuisance. **Source:** City of Milwaukee/Department of Neighborhood Services

## NEIGHBORHOOD STRATEGIC PLANNING REPORT METADATA

### Placard Orders

**Explanation:** Two definitions exist for this data. 1) If a building or any part thereof is unfit for human habitation, occupancy or use but is not in danger of structural collapse the commissioner shall post a sign or placard on the premises. The commissioner shall prohibit the use of the building for human habitation by requiring the owner to vacate and prohibit further occupancy or use until the necessary repairs have been made. 2) In all cases regarding illegal occupancy or use or unsafe buildings, the commissioner may post on the premises a notice to the effect that the building, structure, dwelling unit or equipment is unsafe, or has been ordered razed, or that the building or structure is illegally occupied or used and shall be vacated at once as ordered. **Source:** City of Milwaukee/Department of Neighborhood Services

### New Construction

**Explanation:** Total number of new construction permits and estimated dollar amount filed for in 2004. **Source:** City of Milwaukee/Department of Neighborhood Services

### Land Use

**Explanation:** Residential land use categories consist of single family, duplex and multi-family homes. Commercial consists of wholesale & retail trade. The Other land use category consists of transportation, agriculture & fishing, public/quasi-public, public schools, churches, cemeteries, public parks and quasi-public open spaces. **Source:** City of Milwaukee/Master Property

### Median Sale Price for Residential Properties

**Explanation:** Median sale price is the value of the middle member of a set of sale prices when they are arranged by order. Only residential properties and those sold previous to the current year where included. **Source:** City of Milwaukee/Master Property

### Residential Properties Sold

**Explanation:** Total # of residential properties sold in the previous to present year. **Source:** City of Milwaukee/Master Property

### Milwaukee Economic Development Corporation business loan activity

**Explanation:** Data summarized for loan amounts made under the SBA-504 Debenture program, Capital Access Program, and the MEDC Second Mortgage Loan Program and the number of jobs created or retained through these 3 programs. **Source:** <http://www.medconline.com/Overview/index.asp>

### Page 3 of 5

### Neighborhood Improvement Development Cooperation

**Explanation:** Housing units rehabilitated or constructed through assistance from NIDC.

<http://www.mkedcd.org/housing/nidc.html> **Source:** Neighborhood Improvement Development Cooperation

## NEIGHBORHOOD QUALITY OF LIFE

### Labor Force Characteristics – Persons 16 and Older

#### Total Labor Force

**Explanation:** all people classified in the civilian labor force (i.e., "employed" and "unemployed" people), plus members of the U.S. Armed Forces. **Source:** US Census Bureau 2000 SF3

#### Not in Labor Force

**Explanation:** This category consists mainly of students, individuals taking care of home or family, retired workers, seasonal workers enumerated in an off-season who were not looking for work, institutionalized people (all institutionalized people are placed in this category regardless of any work activities they may have done in the reference week), and people doing only incidental unpaid family work (fewer than 15 hours during the reference week). **Source:** US Census Bureau 2000 SF3

#### In Civilian Labor Force

**Explanation:** people classified as employed or unemployed, not in the armed forces. **Source:** US Census Bureau 2000 SF3

#### Employed

**Explanation:** civilians who were either at work or were with a job but not at work.

#### Unemployed

**Explanation:** civilians if they were neither "at work" nor "with a job but not at work" during the reference week

### Income

#### Average Household Income

**Explanation:** Household income is of the householder and all other (15 years and over in the household) whether related to the householder or not. It the sum of the amounts reported separately for wage or salary income; net self-employment income; interest, dividends, or net rental or royalty income or income from estates and trusts; social security or railroad retirement income.

#### Persons below poverty

**Explanation:** total income of that person's family is less than the threshold appropriate for that family. Total based on 1999 dollars. **Source:** US Census Bureau 2000 SF3

### Tax Filers 2003

(Based on 1990 census tracts. If No Data is available for selected Census Tracts this is due to the change in boundary from 1990 to 2000.)

#### Number of People Filing Income Taxes

**Explanation:** The number of income tax returns for working age tax filers, excluding dependents (teenagers, students

## NEIGHBORHOOD STRATEGIC PLANNING REPORT METADATA

and others) claimed on another adult's tax return and senior citizens claiming the elderly credit or elderly exemption.

### Adjusted Gross Income

**Explanation:** Consists of gross income from taxable sources minus your maximum allowable adjustments.

### Earned Income Credit Tax Filers

**Explanation:** Earned income credit is a special tax benefit for certain working families with at least one qualifying child.

### Total dollar amount for Earned Income Tax Credit

**Explanation:** Dollar amount of qualified earned income tax credits.

### Number of Single Income Tax Filers with Dependents

**Explanation:** Number of single people claiming 1 or more dependents on their income tax form.

### Number of Married Income Tax Filers with Dependents

**Explanation:** Number of married couples claiming 1 or more dependents on their income tax form.

### Number of Elderly Income Tax Filers

**Explanation:** Number of non-working income tax filers.

**Source:** State of Wisconsin Department of Revenue

## Violations

### Graffiti

**Explanation:** Graffiti means any inscription, word, figure or design marked, scratched, etched, drawn or painted with spray paint, liquid paint, ink, chalk, dye or other similar substance on building, fences, structures, equipment and similar places. **Source:** City of Milwaukee/Department of Neighborhood Services

### Boardup

**Source:** City of Milwaukee/Department of Neighborhood Services

### Litter

**Source:** City of Milwaukee/Department of Neighborhood Services

### Nuisance Noise

**Source:** City of Milwaukee/Department of Neighborhood Services

### Rodents

**Source:** City of Milwaukee/Department of Neighborhood Services

### Nuisance Vehicle

**Source:** City of Milwaukee/Department of Neighborhood Services

## Liquor License

### Class A Intoxicating Liquor

**Explanation:** sale of intoxicating liquors for off premises consumption only

### Class A Liquor and Malt

**Explanation:** sale of liquor and malt beverage for off premises consumption only.

### Class A Fermented Malt Beverage

**Explanation:** retail sale of fermented malt beverages for consumption away from the licensed premises

### Class B Fermented Malt Beverage

**Explanation:** consumption of fermented malt beverages on the licensed premises.

### Class B Tavern

**Explanation:** consumption of intoxicating liquors and fermented malt beverages on the licensed tavern premises

**Source:** City of Milwaukee/Licensing Division

## ENVIRONMENTAL

### Combined Sewer Area

**Explanation:** The % of area in the selected nsp area that are within the area of the city where storm-water from roofs, through down spouts, enters the same sewage system as sanitary flows do. During heavy storms, this can cause basement back-ups and overflows of untreated sewage to urban rivers and Lake Michigan. More Information at:

<http://www.mmsd.com/projects/downspout.cfm>, and at <http://www.wibuilder.com/tp-2004/c-corner.html> **Source:** Milwaukee Metropolitan Sewerage District

## Page 4 of 5

## EDUCATION

### Number of Schools

**Explanation:** # of public, private, and religious K-12 schools.

**Source:** EPIC (Empowering Parents for Informed Choices in Education)

### Educational Attainment for Population 25 Years and Over

**Explanation:** Classification of the highest degree or level of school completed. **Source:** US Census Bureau 2000 SF3

## NEIGHBORHOOD VITALITY

### Community Base Organizations

#### **Source**

#### Faith Based Organizations

**Explanation:** places of worship **Source:** City of Milwaukee/Master Property

#### United Way funded Programs

**Explanation:** # of United Way funded programs **Source:** City of Milwaukee/Master Property

#### Parks

**Explanation:** Open space set aside for public use. **Source:** City of Milwaukee/Master Property

#### Community Learning Centers

## NEIGHBORHOOD STRATEGIC PLANNING REPORT METADATA

**Explanation:** Safe Places in Milwaukee Public Schools that specialize in student achievement, family and neighborhood development. **Source:** Safe and Sound Project Brochure  
Safe Places

**Explanation:** Neighborhood resource centers for children, teenager and families open from 3pm - 9pm which offer recreation, academic enrichment, cultural and art activities, personal development, mentoring and nonviolent conflict resolution. **Source:** Safe and Sound Project Brochure  
United Way Funded Sites

**Source** United Way of Greater Milwaukee

Page 5 of 5

### PUBLIC SAFETY

#### Detailed Incident Level Data

##### **Explanation:**

*Aggravated Assault* - An attack by one person upon another for the purpose of inflicting severe injury. This type of assault usually is accompanied by the use of a weapon or by means likely to produce death or injury.

*Arson* - Any willful burning or attempt to burn a building, motor vehicle, aircraft, or personal property or another.

*Burglary* - The unlawful entry of a structure (both residential and non-residential) with intent to commit a theft.

*Criminal Damage To Property* - Willfully injuring, damaging, mutilating, defacing, destroying or substantially impairing the use of any property in which another has an interest without the consent of such other person.

*Homicide* - The willful (non-negligent) killing of one human being by another.

*Locked Vehicle Entry* - Whoever intentionally enters the locked and enclosed portion or compartment of the vehicle of another without consent and with intent to steal.

*Sex Offenses* - Any sexual act directed against another person, forcibly and/or against their will; or, not forcibly or against the person's will where the victim is incapable of giving consent.

*Shootings* - A substantiated claim that a gun was fired.

*Shots Fired* - A person was shot or injured by a fire arm.

*Robbery* - The taking or attempting to take anything of value from the care, custody, or control of a person or persons by force or threat of force or violence and/or putting the victim in fear.

*Theft* - The unlawful taking, carrying, leading, or riding away of property from the possession or constructive possession of another.

*Vehicle Theft* - Theft or attempted theft of a motor vehicle

**Source:** Milwaukee Police Department **Analysis:** Milwaukee Police Department