

CHOOSE YOUR OWN



ADVENTURE



2018 Summer Day Camp Guide
YMCA OF METROPOLITAN MILWAUKEE

WELCOME TO YMCA DAY CAMP!

SAVE WITH A Y MEMBERSHIP

A Y membership is a great value. Members enjoy access to Ys across the country including, all four of our metro Milwaukee area locations. Membership also provides access to hundreds of free classes and programs, reduced rates on swim lessons, youth sports, preschool classes, Kid Care and **DISCOUNTED PRICING ON YMCA DAY CAMP!** Plus, when you join the Y, you're joining an organization that's committed to strengthening our community – together.

We're happy to welcome you to the Y!

For more information, visit ymcamke.org or call 414-276-9622.

**SAVE \$31
A WEEK PER
CHILD BY
BEING A Y
MEMBER!**

**NEW
FOR 2018**
Register online
for day camp at
ymcamke.org!

WELCOME TO THE YMCA OF METROPOLITAN MILWAUKEE DAY CAMP

At all five YMCA of Metropolitan Milwaukee Day Camps, we pride ourselves on creating a warm environment for all children. The summer day camp staff is one big family and that is how we approach our campers and parents, as family.

All children are unique; we embrace this! Our number one goal at camp is for our campers to build self-esteem and love who they are. Whether your camper is an athlete, artist, scientist, shy, the ham of the family, dancer, performer, detective, outdoor enthusiast, musician, chef, or simply a child ready to go on an adventure of a lifetime; there is no place like camp because all children fit in at YMCA of Metropolitan Milwaukee day camp.

I am proud to say this will be my 15th year being involved with summer camp for the Y, and the directors have a combined 50 years of experience. I guarantee that your campers will have plenty of opportunities to meet new friends, sing songs, meet potential new heroes and role models in the form of dedicated camp counselors, grow as individuals, and ask, "When do I get to come back?"

My staff and I are committed to making sure our campers are safe, accepted and respected for who they are. I am proud of our leadership staff and counselors for their dedication to ensuring each camper has the time of his or her life. I look forward to going on this adventure with you and helping your children reach new heights.

Chris Przedpelski

Senior Association Director of Day Camp
YMCA of Metropolitan Milwaukee



DAY CAMP OPEN HOUSES AT ALL LOCATIONS:

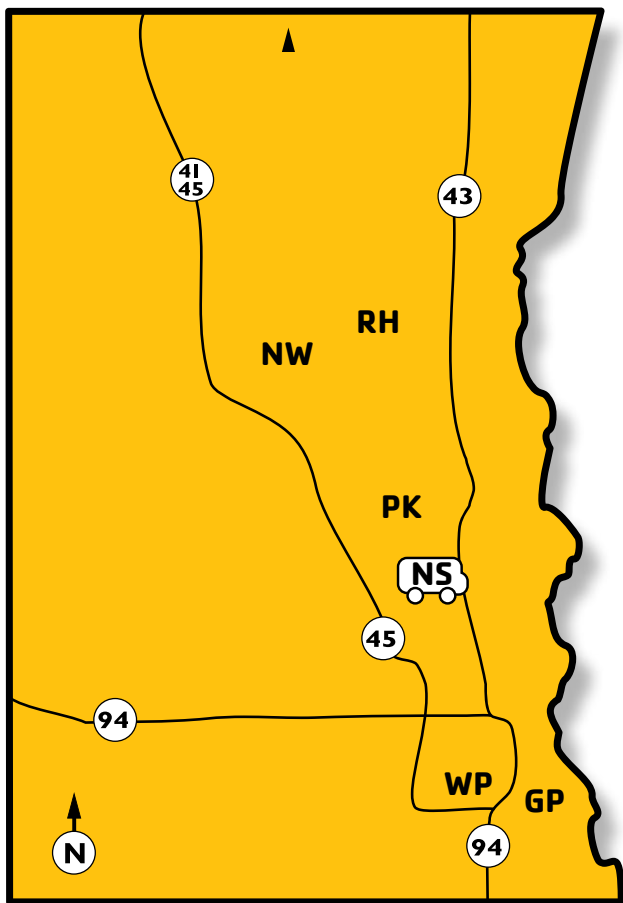
Tuesday, June 5
from 5:30–8 pm
AND
Saturday, June 9
from 9:30 am–Noon

CAMP BEGINS:

Monday, June 11

CAMP ENDS:

Friday, August 24



LOCATIONS

We offer Day Camp at many locations in the greater Milwaukee area. Each camp offers Traditional, Sports and Specialty camps.

YMCA of Metropolitan Milwaukee Day Camp Sites

- NW Northwest YMCA, Milwaukee
(Adaptive Camps)
9050 N. Swan Rd.
Milwaukee, WI 53224
- PK Parklawn YMCA
4340 N 46th St.
Milwaukee, WI 53216
- RH Rite-Hite Family YMCA
9250 N. Green Bay Rd.
Brown Deer, WI 53209
- GP YMCA at Greene Park
4235 S. Lipton Ave.
St. Francis, WI 53235
- WP YMCA at Wilson Park
1601 West Howard Ave.
Milwaukee, WI 53221

Bus Stops

- NS Northside YMCA, Milwaukee
(attend camp at Northwest YMCA)
Northside YMCA Campers AM Drop-off: 7-7:45 am
Return to Northside YMCA for PM Pick-up: 4:30-6 pm

BELONGING • ACHIEVEMENT • RELATIONSHIPS

OUR CAUSE

We believe that lasting personal change can only happen when we all work together to invest in our children, our health, and our neighbors. That's why, at the YMCA, strengthening community is our cause and passion. Every day, we work side-by-side with our neighbors to make sure that regardless of age, income or background, everyone has the opportunity to learn, grow, and thrive.

The YMCA of Metropolitan Milwaukee Day Camp is focused on creating memories, building relationships, and fostering a sense of belonging through personal achievement. Our concentrated vision is to bridge the gap of summer learning loss through a variety fun activities along with promoting character development. Raising the bar one summer at a time.

YMCA DAY CAMP

At YMCA Day Camp, caring "Community Heroes" create experiences that build character, confidence, friendship, skills and the framework of our youth. All of our Y Camps strive to instill the Y's four core values of caring, honesty, respect and responsibility into every activity, every day.



CARING:

Considerate to the needs and feelings of others



RESPECT:

Treating others, the environment and yourself with dignity



HONESTY:

Being trustworthy and truthful



RESPONSIBILITY:

Accepting accountability for your actions and role in the community

AT SUMMER DAY CAMP YOUR CHILD WILL EXPERIENCE...



WHY CHOOSE THE Y FOR YOUR CHILD'S SUMMER?



SAFE

- 1:6* staff to child ratio for 4 year olds
- 1:10* for 5 and 6 year olds
- 1:12* for 7 to 12 year olds
- Qualified counselors who receive over 40 hours of training in behavioral guidance, strategies to help campers feel comfortable in a new environment, how to make friends and much more!
- All counselors are at least 18 years old
- Staff are all certified in CPR, AED and First Aid
- Y Day Camps meet state licensing Day Camp Child Care guidelines

* Note: When there is a mixed age group, the staff-to-child ratio will be adjusted on a prorated basis, according to age.



AFFORDABLE

- Free Before and After Care (7-8:30 am, 4:30-6 pm)
- Free weekly field trips
- Morning and afternoon snack provided at no extra cost
- Free breakfast and lunch at ALL Day Camp locations
- Discounted YMCA swim lessons optional for campers (only offered at Rite-Hite Family YMCA location)
- Additional child discounts for your family
- Scholarships available (upon request) thanks to donors
- Become a YMCA of Metropolitan Milwaukee member and save!



FUN

- Camper's choice educational skill activities
- Healthy living habits
- Large group games
- Team building activities
- Environmental education
- Reading and rest time
- Opening and closing ceremonies
- Sports
- Small group activities
- Arts and crafts
- Swimming
- Weekly field trips
- Tons of FUN!
- Benefits: friendships, decision making and problem solving skills, team building and more!

A TYPICAL DAY OF CAMP

Each day of camp provides a variety of safe and fun adventures!
The following is a display of your camper's day at camp.



7 am DROP OFF – Campers can be dropped off as early as 7:00 am

7–9 am (FREE!) BEFORE CARE – Age appropriate structured activities & breakfast provided

9 am OPENING CEREMONY – Get loose with camp songs and Food for Thought

CAMP DAY 9 am – 4 pm

Throughout the day, campers will participate in a wide variety of small and large group games, skills, arts & crafts, science projects, read for 30 minutes, solve math problems for 30 minutes, civic engagement activities to impact their community, swim, lunch provided, rest and relaxation periods; all while growing as individuals.



3:30 pm CLOSING CEREMONY – Camp songs, camper recognition, and reminders

4–6 pm (FREE!) AFTER CARE – Age appropriate structured activities.
Healthy snack provided

6 pm PICK UP – Campers must be picked up no later than 6:00pm

WHAT TO BRING TO CAMP EACH DAY

Please add your child's name on everything they bring to camp. If any other supplies are needed, your counselor will inform you during the Sunday night phone call. Also, please send your camper in clothing that is okay to get dirty.

Backpack

Swimsuit
and Towel

Sunscreen and
Bug Spray

Weather Appropriate
Apparel Including
Closed Toe Shoes



Reusable
Water Bottle

Book

What to leave home:

All electronics, cell phones, toys (stuffed animals, Pokémon, Legos, etc.). The Y is not responsible for lost or broken items.

CHOOSE YOUR OWN ADVENTURE!

	TRADITIONAL see page 10	SPORTS see page 11	JUNIOR SPECIALTY see page 13	SPECIALTY see pages 14-15	LEADERS IN TRAINING see page 12
	Offered at all locations 4-13 year olds	Offered at all locations 7-13 year olds	Offered at all locations 5-7 year olds	Offered at all locations 7-13 year olds	Offered at all locations 13-17 year olds
	\$184 for Y Member (5-12 year old) \$198 for Y Member (4 year old) \$215 for Community (5-12 year old) \$229 for Community (4 year old) Partial Week Option Available	\$184 for Y Member \$215 for Community	\$200 for Y Member \$230 for Community	\$200 for Y Member \$230 for Community	\$50 for Mandatory Intro Week \$25/Week for Skill Weeks
Week 1: June 11 - 15	Hawaiian Hullabaloo	Sports Sampler	Jr. Lego Camp Mini Chefs (Parklawn Only)	Art 101 Mad Scientist	
Week 2: June 18 - 22	Amazing Race	Basketball	Lil Scientist	Animal Kingdom (Includes zoo field trip) Comic Book Creation Cooking Camp (Greene Park Only)	Mandatory Intro Week
Week 3: June 25 - 29	Outer Space is the Place	 NFL Football Camp (Reversible GB Packers jersey included while supplies last)	Jurassic Camp Mini Chefs (Greene Park Only)	Fishing Camp (Includes 4 field trips) Diva Camp	Values
Week 4: July 2 - 6 (No Camp July 4th)	Holiday Everyday!	Soccer			Volunteerism
Week 5: July 9 - 13	Water Water Everywhere	 NFL Football Camp (Reversible GB Packers jersey included while supplies last)	Jr. Gymnastics Mini Chefs (Rite-Hite Only)	Drama Camp Fashion and Jewelry Design Coding Camp (Rite-Hite Only)	Communication
Week 6: July 16 - 20	Around the World in 5 Days	Basketball	Treasure Hunters	Lemonade Stand Gymnastics Cooking Camp (Northwest Only)	Influencing & Developing Others
Week 7: July 23 - 27	Game Show Mania	Dodgeball	Stuffed Pet Vet Mini Chefs (Wilson Park Only)	Future Engineers Bowling Camp (Bowl 4 days)	Inclusion
Week 8: July 30 - Aug. 3	The Mighty Jungle	Soccer	Jr. Lego Camp	Outdoor Survival (Includes a camping trip) Everything Aqua Cooking Camp (Parklawn Only)	Community and Relationships
Week 9: Aug. 6 - 10	I Love the 90's	Flag Football	Junior Gymnastics Mini Chefs (Northwest Only)	Cardboard Creations Force Camp	Project Management
Week 10: Aug. 13 - 17	Superheros	Sport Sampler	Silly Seuss	Gymnastics Don't Forget Your Passport Cooking Camp (Wilson Park Only)	Coaching and Mentorship
Week 11: Aug. 20 - 24	Wacky and Wonderful		Superheros	Lemonade Stand Art 101	Personal Growth & Development

PARENT & REGISTRATION INFORMATION

Use **page 6** as a reference to build your child's adventure! Fill in the blanks for each week and write the camp you would like to enroll your child in. Use this sheet as a guide when you register online or via the form provided in this brochure.

	CHILD'S NAME:	CHILD'S NAME:	CHILD'S NAME:
WEEK 1			
WEEK 2			
WEEK 3			
WEEK 4			
WEEK 5			
WEEK 6			
WEEK 7			
WEEK 8			
WEEK 9			
WEEK 10			
WEEK 11			

KIDS NEED CAMP

in a typical summer, campers will experience



2,400 MINUTES

outdoors each week



11

fun, educational field trips throughout summer



180 MINUTES

of swimming each week



150 MINUTES

of math each week



150 MINUTES

of reading each week



0 MINUTES

of playing video games, texting, on social media, on a computer, or listening to music with headphones

REGISTRATION

**NEW
FOR 2018**
Register online
for day camp at
ymcamke.org!

The YMCA of Metropolitan Milwaukee's Summer Day Camp is an 11-week program that runs June 11 – August 24, 2018. Campers can sign up for one or more weeks.

HOW TO REGISTER

Register online, via email, or mail.

At time of registration, a completed 2018 Summer Day Camp Registration Form, Health History, and Emergency Care Plan (pgs 17 and 18) is required for each camper.

A one-time \$25 processing fee with an additional \$10 deposit for each week is due at the time of registration. Children will be taken off rosters and deposits will be forfeited if all required paperwork is not on file at least 10 days prior to the start of your child's first day of camp.

**MARK YOUR
CALENDAR!**

Day camp
registration opens
February 5, 2018!

QUESTIONS? For registration questions please call 414-224-9622.



ONLINE REGISTRATION

Want to save time and register online? Please have all documentation and paperwork ready prior to starting the online process.

1

Go to www.ymcamke.org and click the bottom that reads "REGISTER FOR DAY CAMP" and you're on your way.

2

Once logged in (if you have not logged in before, the online system will walk you through the options to create or update your account) select your child, enter their information, select the weeks you need camp, answer the required questions, and add the camps to your cart.

You must complete the full registration at one time.

3

If you have additional children you wish to register for camp, circle back around, select your other child and repeat the process.

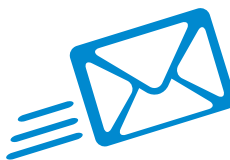
4

Finish by paying the deposits, check your payment schedule, and your family is ready for summer!



E-MAIL REGISTRATION

You can scan and e-mail all completed forms and payment information to daycamp@ymcamke.org.



MAIL REGISTRATION

Mail your completed registration and payment to:

YMCA Day Camp Registration
9050 N. Swan Rd.
Milwaukee, WI 53224

PAYMENT INFORMATION

WEEKLY PAYMENT

Weekly payments are due 10 days prior to the chosen week of camp. Upon completion of registration (pages 17-19) your balance will automatically be set up for auto pay. Camp payments are non-refundable.

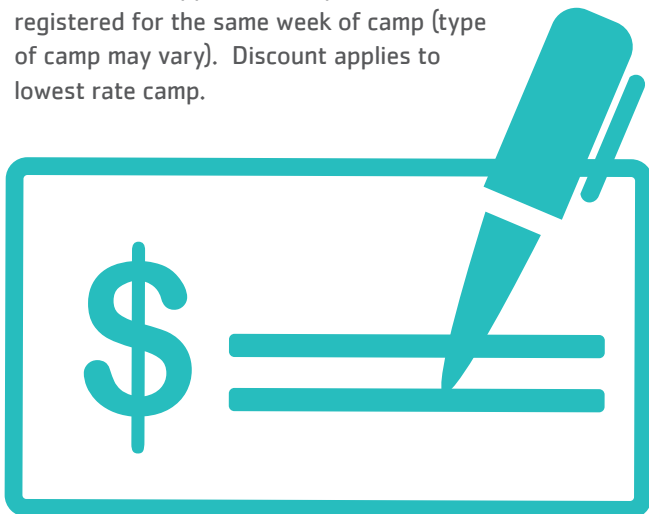
DEPOSITS

REGISTRATION FEE: A one-time per summer registration fee of \$25 is due at the time of registration.

A \$10 deposit is due for each week of camp at the time of registration. Deposits are nonrefundable. Deposits may be transferred to a new week of camp on a space available basis. Transfer must be completed 7 days prior to the start of the camp week initially registered for. Deposits cannot be transferred to a week in which you are already registered and cannot be transferred to another YMCA program.

ADDITIONAL CHILD DISCOUNT

YMCA of Metropolitan Milwaukee members receive 15% off when more than one child is enrolled. Community Participants receive 10% off. Discount applies to campers who are registered for the same week of camp (type of camp may vary). Discount applies to lowest rate camp.



YMCA FINANCIAL ASSISTANCE

Individuals and families may apply for financial assistance for membership or programs such as Summer Day Camp. Assistance is based on a number of factors, including total household income and number of dependents. The process is confidential. Call 414-274-0756 for more information and an application.

WISCONSIN SHARES CHILD CARE ASSISTANCE & FINANCIAL ASSISTANCE

The YMCA of Metropolitan Milwaukee offers many Summer Day Camps that are licensed by the Department of Children and Families and accepts Wisconsin Shares Child Care Assistance for all summer day camp options such as Traditional, sports, and specialty camps.

Contact your Wisconsin Shares office for approval as you must have authorization before we can register your child for Summer Day Camp.

COUNTY CONTACTS

Milwaukee, Waukesha, and Ozaukee Counties:

1-888-947-6583

Washington County:

1-262-335-4610

YMCA of Metropolitan Milwaukee

Provider Number:

1000558721

Location Numbers:

Greene Park: 165

Northwest YMCA: 072

Parklawn YMCA: 073

Rite-Hite Family YMCA: 012

Wilson Park: 064

TRADITIONAL DAY CAMP AGES 7-12



Join YMCA Day Camp for one week or for an entire summer of fun! We focus on caring, honesty, respect, and responsibility in all of our activities, from educational camper-chosen skill sessions to swimming, arts and crafts and games. We provide fun-filled activities that allow for physical involvement, social interaction, educational opportunities, leadership building, personal growth and creativity. Day campers will be divided into groups by age with activities appropriate to the interests and needs of each group.

TRADITIONAL DAY CAMP (SCHOOL READINESS) AGES 4-6



A child's readiness for school is multi-faceted, encompassing the whole range of physical, social, emotional, language and cognitive skills that children need to thrive.

In the morning your camper will enjoy a morning of four structured cognitive lessons that resemble the rules and culture of school along with four "brain breaks". The afternoon will focus on social and emotional skill building in the camp environment. School readiness campers will be divided into groups by age with activities appropriate to the interests and needs of each group.

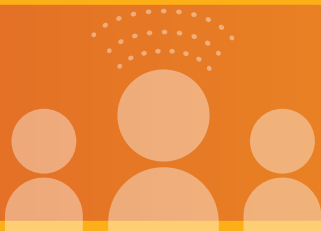




SPORTS CAMP AGES 7-12



YMCA Sports Camps are offered for children who want to develop skills and techniques, while learning the value of teamwork, sportsmanship and fair play. Each camp will include drills, skill development, learning the rules of the game and actual play, all while reinforcing the core values of caring, honesty, respect and responsibility.



ADAPTIVE CAMP AGES 5-17

Available at Northwest YMCA

YMCA Adaptive Camp is an inclusive program for individuals with physical, cognitive, sensory, and/or multiple disabilities. Campers will have fun while participating in songs, arts and crafts, gym time, swim time, field trips and more. Activities are designed to develop and improve gross and fine motor skills along with social skills in a structured environment.

The staff to camper ratio is 1:3.

An intake meeting with the camp staff is mandatory for all first time campers to ensure that we are able to accommodate the needs of every child within our program.

About Northwest YMCA: Home of the Miracle Field (Milwaukee’s first universally-accessible baseball field) and Miracle League, this location features an accessible outdoor pool, trails through the woods and around the property, a stage/theater (indoors and outdoors), and an accessible playground.

.....
Y Member Rate: \$233/week
.....
Community Participant Rate: \$263/week
.....



LEADERS IN TRAINING AGES 13-17

Leaders in Training (LIT) is a summer program for teens, that challenges participants to be positive role models and future leaders in our community. Participants are able to put their new leadership skills that they learn everyday by leading activities for younger campers and engaging in a variety of community service projects throughout the summer. Looks great on college applications!

LEVEL 1 Intro to LIT: \$50 (JUNE 18 – 22)

This one week intro session is required for all LITs. The week will consist of becoming affiliated with the program and camp. The sessions will teach LITs about role modeling, expectations, goal setting, getting to know LITs from all 5 camp locations, team building, and camp activities. Upon successful completion of Level 1, LITs may sign up for one or all Level 2 sessions for the remainder of summer.

LEVEL 2 \$25/WEEK

After successfully completing Level 1 the Level 2 weekly sessions focus on specific skill sets each week along with a weekly civic engagement service project within the community, and a weekly field trip with LITs from all 5 Day Camps. Examples of skills that will be worked on are communication, values, personal growth & development, and inclusion.

All teen are required to complete an application and participate in an interview process to develop job skills. We understand that your teen is busy during the school year and we intend on your teen being busy during summer so we accept phone interviews as well as in person.

**Applications can be found at
ymcamke.org/daycamp.**



Intro to LIT

Required session. LITs will learn about expectations, role modeling, civic engagement, and goal setting all within the inner workings of camp.



Values

LITs will learn about the Y's four core values of caring, honesty, respect, and responsibility and how they fit into our lives.



Volunteerism

LITs will learn about the importance of volunteering in one's community, volunteer opportunities, and what to expect when volunteering.



Communication

LITs will focus on effective methods of communication, collaborating as a team, and why communication is important.



Influencing & Developing Others

LITs will learn about listening and communicating with others as a leader. They will use these skills in a variety of ways throughout summer and beyond.



Inclusion

LITs will learn about working with others from many different backgrounds, preventing exclusion as a form of bullying, and the importance of including everyone. We are stronger together!



Community & Relationships

LITs will focus on building quality relationships while at camp with peers, campers, and staff. Strong relationships equal a vibrant camp community.



Project Management

LITs will focus on setting goals and implement a plan of how to achieve them. The goals can be short term, long term, or both! Organization strategies will be taught along with how these strategies affect us and the people we work with.



Coaching & Mentorship

LITs will focus on coaching and mentoring others to the best of their ability. This includes finding what motivates others to succeed and what type of strategies can be used to mentor others.



Personal Growth & Development

LITs will focus on what it means to self-develop, how growth applies to us, and the effect that seeking growth has on each of us as individuals.

JR. SPECIALTY CAMPS AGES 5-6

Does your child have a specific interest, hobby, or they simply want to try something new? Chances are we have a specialty camp for them!

Campers spend at least three hours per day, four days per week, focusing on their Specialty Camp and the rest of the day enjoying Y Day Camp activities like swimming, arts & crafts, games, and songs. Your child will also attend the weekly camp field trip. Campers must meet the minimum age prior to the week they wish to attend.

Jurassic Camp

Join us for an excursion back in time to the golden age of the dinosaurs! Working with staff, campers will uncover the mysteries left behind from prehistoric habitats, and piece together what it was really like to roam the earth when dinosaurs roared.

Jr. Gymnastics

Flip, tumble, and turn. This camp is perfect for your little acrobats! Learn the basics of gymnastics while having fun with your friends! Activities will focus on basic tumbling, body awareness, balance, coordination, and flexibility.

Jr. Lego Camp

Get ready to draw blueprints, create towers, and build a city with Jr. Lego Camp! Campers will learn the basics of Lego construction while being challenged to use their imaginations and teamwork.

Jr. Superhero Camp

This camp is for the superhero in every child. Campers will spend time this week developing their own superhero, dressing up as their favorite superhero character, meeting every day heroes in our community, making superhero crafts and more.

Silly Seuss

From Hop on Pop to Green Eggs and Ham, Silly Seuss Camp will be a slam! Have tons of fun out in the sun reading books to everyone. Unleash your imagination while you make your own creations. If you love to rhyme, you'll have a great time!

Lil Scientist

Let your lil' scientist explore and experiment with new 'elements' each day! Activities will provide campers with hands-on learning to explore the world of science the camp-way.

Stuffed Pet Vet

In a world where your favorite stuffed animals are getting injured and hurt, we are in need of campers to help heal them. Campers will learn basic first aid skills, run a unique animal hospital and most importantly save their best friends! Don't forget to bring a stuffed animal to camp!

Mini Chefs

Campers learn some easy-to-make and easier-to-eat recipes for appetizers, main dishes and desserts – then we eat what we make!

Treasure Hunters

Unravel mysteries, crack clues, and decode symbols to unlock the secrets to our YMCA treasures. Spend your camp day learning to solve a variety of coded puzzles. Who will claim the treasure?



SPECIALTY CAMPS AGES 7-12



Everything Aqua

*Must be able to pass swim test

Splish, splash, you'll have a blast in All Things Aqua Camp! Throughout the week, campers will learn swim strokes, dive techniques, and water safety skills. Not only will this camp get more swim time than traditional camp, but we will also include unique twists on water games such as water polo. If your camper loves making waves and swims like a fish this is the perfect camp for them. You can look forward to a swimtastic week!

Cooking Camp

Learn how to make appetizers, main dishes and desserts and then eat what we make! Go home with recipes to cook for family and friends.

Cardboard Creations

Get ready for a week-long adventure with cardboard! Use your imagination to construct carnival games, pirate ships, forts, castles and more – take your imagination to the next level! Caution: no hard hats required.

Bowling Camp

Practice your splits, spares and strikes! Take trips to the local bowling alleys and learn bowling techniques. We will also have silly competitions. Additional field trips this week.

Diva Camp

Each day everyone will get pampered through fashion and fun. We will have hands-on training in skincare and age appropriate make-up application techniques, manicures and, of course, nutrition tips. Then learn modeling including turns, poses and walking techniques.

Drama Camp

Lights, camera, action! Learn about the theatre and get a behind the scenes view of productions. Learn how to create a set, direct a production, write a scene or script, enhance your acting skills, and market a show.

Don't Forget Your Passport

Traveling around the world seems like the perfect way to spend a week in the summer. Our campers will be doing just that as we "leave" our camp site each day and travel the world in our supersonic jet. Campers will see a different country each day, taste a new food, create an art project and learn how to say hello and goodbye in a different language. Adios...your plane is departing, and we hope you'll join us.

Fishing Camp

Love to fish? Then this camp is perfect for you, as we fish four days of the week in local lakes, ponds and rivers. Learn casting techniques, how to put bait on and take the fish off, and so much more! Campers are required to bring their own pole. Additional field trips are held this week. *Weather permitting – no refunds.

Gymnastics Camp

Campers will travel to the YMCA's Gymnastics Center in Mequon where they will be taught by our trained gymnastics coaches and learn the fundamentals of gymnastics on balance beam, uneven parallel bars, floor exercise and vault. Campers will have fun while learning new skills and overcoming obstacles. Our structured stations combined with hands-on learning will be sure to bring success with lots of fun.

Mad Scientist

Get ready to mix up some fun at Mad Scientist Camp! Campers will study the environment, weather, physics, astronomy, bugs and wildlife – the possibilities are endless at Mad Scientist Camp.

Lego Mania

For campers who love to build with Legos, this educational camp takes physical science and technology concepts and applies them in a fun and creative way. Campers learn about forces and motion, simple machines, measurement, energy and more!

Force Camp

The Force can be strong with you! Campers will begin the week as Padawans who are preparing to begin their Jedi training. Throughout the week, these Padawans are challenged through daily activities only practiced in a galaxy far far away paving the way to become a Jedi.

Lemonade Stand

Spend a week with us and get a glimpse into what it takes to run a successful business. Start with company structuring by assigning jobs, responsibilities and titles. Then test your product in the kitchen with a randomly selected panel. Finally, take your product to the public and sell as much lemonade as you can. All proceeds benefit youth programs.

Outdoor Survival Camp

Can you survive in the wild with just the supplies in your backpack? After a week with us you will be able to do just that! Campers will learn survival skills including making a fire, building a shelter and identifying wild edibles. Campers will also learn new skills such as hiking, navigation, archery and much more. This camp includes an overnight camping trip from Thursday to Friday.

Art 101

Get creative, get messy and have fun creating art! From drawing to painting to sculpture to ceramics, you'll get a chance to experience it all.

Animal Kingdom

Let's go on an animal adventure! Learn, discover, and explore more than you thought possible about the animal kingdom. Campers will get to know how important biodiversity is to our everyday life.

Comic Book Creation

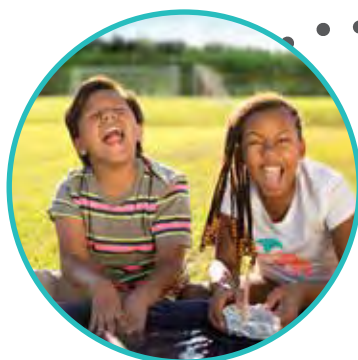
Let your imagination run wild as you take your very own comic book character through the stages to create your own comic book. We'll start at storyboarding, and move through to sketching, then on to coloring, and finish off with publication. Share your work with all your friends!

Fashion and Jewelry Design

Design your own personalized jewelry and accessories. Create jewelry using pre-made beads and more. Make pins, bracelets, necklaces, earrings and hair ornaments. Design your heart out as you show your true style.

Future Engineers

Learn about the different types of engineers and what they specialize in. Gain a deeper understanding of hydraulics, aerodynamics, currents, and logistics. Use your new found knowledge to test some theories and experiment in new and exciting ways. Campers mind will be blown away with what they will learn and experience.



CAMP FEES & PAYMENT SCHEDULE

**NEW
FOR 2018**

Register online
for day camp at
ymcamke.org!

WEEKLY CAMP FEES			
CAMP OPTIONS	DAYS	MEMBER	COMMUNITY
Traditional Camp 5-13 years	4-5 days/week	\$184	\$215
Traditional Camp 5-13 years	3 days/week	\$122	\$142
Traditional Camp 4 years	4-5 days/week	\$198	\$229
Traditional Camp 4 years	3 days/week	\$128	\$148
Sports Camp	5 days/week	\$184	\$215
Jr. Specialty Camp	5 days/week	\$200	\$230
Specialty Camp	5 days/week	\$200	\$230
LIT Intro Session	5 days	\$50	\$50
LIT Weekly	5 days/week	\$25	\$25
Adaptive Camp	5 days/week	\$233	\$263
Adaptive Camp	3 days/week	\$150	\$180



PAYMENT SCHEDULE

Camp Week	WEEKLY	MONTHLY
	Payment Due Date and Registration Deadline	Payment Due Date and Registration Deadline
Week 1 June 11-15	Friday, June 1	June 1
Week 2 June 18-22	Friday, June 8	June 1
Week 3 June 25-29	Friday, June 15	June 1
Week 4 July 2-6	Friday, June 22	July 1
Week 5 July 9-13	Friday, June 29	July 1
Week 6 July 16-20	Friday, July 6	July 1
Week 7 July 23-27	Friday, July 13	July 1
Week 8 July 30-Aug. 3	Friday, July 20	July 1
Week 9 Aug. 6-10	Friday, July 27	July 1
Week 10 Aug. 13-17	Friday, Aug. 3	Aug. 1
Week 11 Aug. 20-24	Friday, Aug. 10	Aug. 1



Late payments WILL result in a \$10 late fee.

- ✓ All payments must be made before child can attend camp each week.
- ✓ Registration is limited and is based on availability, so please register early.
- ✓ Registrations received after the deadline may not be accommodated and will result in a \$10 late fee.



2018 Registration, Health History and Emergency Care Plan
YMCA of Metropolitan Milwaukee Summer Day Camp Programs

REGISTRATION PAGE 1 OF 2

NEW FOR 2018-Register online for day camp at ymcamke.org.

Child Information

Child's First Name _____ Middle Initial _____ Last Name _____ Gender ☐ M ☐ F ☐ Transgender Birth date ____ / ____ / ____

This will be my child's ____ year at YMCA Day Camp Age (at start of program) ____ Child resides with ☐ Mother ☐ Father ☐ Both Other _____

Parent/ Guardian Information – Both parents must be listed or use N/A if not applicable.

#1 Parent/Guardian First Name _____ Middle Initial _____ Last Name _____ Gender ☐ M ☐ F Birth date ____ / ____ / ____

Address-Home (Street, City, State, Zip) _____

☐ My address changed since last school year. Home Phone Number: _____ E-Mail _____

Where can we reach you while your child is at YMCA Day Camp? Work Phone Number: _____ Cell Phone Number: _____

Daytime Address _____

#2 Parent/Guardian First Name _____ Middle Initial _____ Last Name _____ Gender ☐ M ☐ F Birth date ____ / ____ / ____

Address-Home (Street, City, State, Zip) _____

☐ My address changed since last school year. Home Phone Number: _____ E-Mail _____

Where can we reach you while your child is at YMCA Day Camp? Work Phone Number: _____ Cell Phone Number: _____

Daytime Address _____

Emergency Contacts/ Others Authorized to Pick Child Up – Must put one person other than parent or guardian. *Can add more on a separate sheet of paper.

#1 Contact First Name _____ Last Name _____ Relationship to child _____

Address-Home (Street, City, State, Zip) _____

Phone Numbers: Home _____ Work _____ Cell _____

#2 Contact First Name _____ Last Name _____ Relationship to child _____

Address-Home (Street, City, State, Zip) _____

Phone Numbers: Home _____ Work _____ Cell _____

12 Medical and Behavior Questions to help us provide the best care to your child. All information is confidential to Y Staff.
(ALL lines MUST be filled out. If something does not apply, please use N/A)

1. Has your child had any of the following, if so, please explain

- ☐ Asthma ☐ Autism ☐ Diabetes
☐ ADD/ADHD ☐ Epilepsy/Seizures ☐ Cerebral Palsy/Motor Disorder
☐ Cognitively or Learning Disabled ☐ **NONE (QUESTIONS 1–8)**

☐ Dietary restrictions _____

☐ Food/milk allergies _____

If child is allergic to milk, attach a statement from a medical professional indicating an acceptable alternative.

☐ Gastrointestinal or feeding concerns, including special diet and supplement

☐ Non-food allergies _____

☐ Status of vision, hearing and speech _____

☐ Other conditions requiring special care _____

2. Triggers that may cause any of the above problems (specify) _____

3. Signs or symptoms to watch for _____

4. Steps the childcare provider should follow _____

5. Identify any staff to whom you gave specialized training/ instructions _____

6. When to call parents regarding symptoms or failure to respond to treatment _____

7. When to consider that the condition requires emergency medical care or reassessment _____

8. Additional information that may be helpful to us _____

9. Emergency Numbers

Physician Name _____ Phone _____

Address _____

10. List the MONTH, DAY AND YEAR the child received each of the following immunizations. DO NOT USE a (✓) or (x). If you do not have an immunization record for this child, contact your doctor or local health department to obtain the records.

TYPE OF VACCINE	1st Dose M/D/Y	2nd Dose M/D/Y	3rd Dose M/D/Y	4th Dose M/D/Y	5th Dose M/D/Y
Diphtheria-Tetanus-Pertussis Specify DTP, DTaP, or DT					
Polio					
Hib (Haemophilus Influenzae Type B)					
Pneumococcal Conjugate Vaccine (PCV)					
Hepatitis B					
Measles-Mumps-Rubella (MMR)					
Varicella (chickenpox) vaccine Vaccine is required only if the child has not had chickenpox					

Has child had Varicella (chickenpox) disease? Check the appropriate box and provide the year if known.
☐ Yes; year _____
☐ No or Unsure (Vaccine is required)

☐ My child does not meet all immunization requirements. These requirements can only be waived if a properly signed health, religious or personal conviction waiver is filed with the day camp. Visit ymcamke.org for forms.

11. Is the child currently taking any medications? ☐ Yes ☐ No

If yes, what kind and why _____

If medication needs to be administered during YMCA School Age programming, a Medication Permission Form MUST be completed. Visit ymcamke.org for forms.

12. Sunscreen/Insect repellent (if provided by a parent), and each bottle must be labeled.

- ☐ I authorize staff to apply sunscreen to my child
☐ I authorize staff to allow my child to self-apply sunscreen
☐ My child may use any sunscreen provided by YMCA Day Camp programs (NO-AD Brand SPF 30) if theirs runs out or is missing.

If no, will only allow my child to use the sunscreen provided by parent:

Brand Name _____ Strength _____

- ☐ I authorize the staff to apply repellent to my child
☐ I authorize the staff to allow my child to self-apply repellent

☐ My child may use any repellent provided by YMCA Day Camp programs (Off Brand 25% DEET) if theirs runs out or is missing.

If no, I will only allow my child to use the repellent provided by parent:

Brand Name _____ Strength _____

YMCA DAY CAMP REGISTRATION

REGISTRATION PAGE 2 OF 2

CAMPER'S NAME _____

CAMP LOCATION (SEE PAGE 1) _____

CHILD'S START DATE _____

Name of school your child attends: _____

M: Member

CP: Community Participant

Traditional Camp - Full Day
4 yr old M: \$198 CP: \$229
5-12 yrs old M: \$184 CP: \$215
\$10 deposit/week
* Weekly theme listed below

Sports Camp - Full Day
Ages 7-12 only
Rates M: \$184 CP: \$215
\$10 deposit/week
* Check the week below and indicate location

Specialty Camp - Full Day
Please write in the camp title found in this brochure.

\$10 deposit/week
* Rates and ages vary, please see Specialty Camp section of this brochure

Week 1 June 11-15	<input type="checkbox"/> Hawaiian HulaBalo	<input type="checkbox"/> Location:	<input type="checkbox"/> Title:
Week 2 June 18-22	<input type="checkbox"/> Amazing Race	<input type="checkbox"/> Location:	<input type="checkbox"/> Title:
Week 3 June 25-29	<input type="checkbox"/> Outer Space is the Place	<input type="checkbox"/> Location:	<input type="checkbox"/> Title:
Week 4 July 2-6	<input type="checkbox"/> Holiday Everyday	<input type="checkbox"/> Location:	<input type="checkbox"/> Title:
Week 5 July 9-13	<input type="checkbox"/> Water Water Everywhere	<input type="checkbox"/> Location:	<input type="checkbox"/> Title:
Week 6 July 16-20	<input type="checkbox"/> Around the World in 5 Days	<input type="checkbox"/> Location:	<input type="checkbox"/> Title:
Week 7 July 23-27	<input type="checkbox"/> Game Show Mania	<input type="checkbox"/> Location:	<input type="checkbox"/> Title:
Week 8 July 30-August 3	<input type="checkbox"/> The Mighty Jungle	<input type="checkbox"/> Location:	<input type="checkbox"/> Title:
Week 9 August 6-10	<input type="checkbox"/> Holidays Everyday	<input type="checkbox"/> Location:	<input type="checkbox"/> Title:
Week 10 August 13-17	<input type="checkbox"/> Superheros	<input type="checkbox"/> Location:	<input type="checkbox"/> Title:
Week 11 August 20-24	<input type="checkbox"/> Wacky and Wonderful	<input type="checkbox"/> Location:	N/A

* We cannot accommodate requests for campers to be in the same group. For a complete listing of Day Camp offerings and descriptions, visit www.ymcamke.org.

** YMCA of Metropolitan Milwaukee day camp is CLOSED on July 4.

Payment and Deposit Information

Please note, registrations will not be processed without registration fee, deposits, and indicated method of payment.

Total deposit amount \$ _____

I am paying: ☐ Monthly Payment: All registered weeks in month must be paid by the first of the month.
☐ Weekly Auto Payment: You provide a valid credit card that will be automatically charged 10 days before start of camp.

Credit Card # _____ Exp: ____ / ____
OR Check Enclosed: Amount \$ _____

This information will only be used for your deposits or full payment. To set up the Weekly Auto Pay option, you must fill out and submit an Automatic Payment Form.

Subsidy Provider Information

A current "Authorization of Service" must be on file before your child's registration will be accepted and registered. All WI Shares payments must be made on the first of the month using your MyWICChild card. If payment is not made, spots in chosen weeks maybe lost.

Our family currently receives subsidy from:

☐ County/State/Wisconsin Shares
☐ Third Party Agency
☐ Other

Agency Name: _____

Paperwork submitted to County/Agency ☐ Yes OR ☐ No

Notes: _____

* I understand that I am responsible for any amounts not covered by my Subsidy Provider:
Initial _____

YMCA Provider #1000558721

Ethnicity (optional)

☐ Native American
☐ Caucasian/White
☐ Asian/Pacific Islander
☐ Hispanic
☐ African American/Black
☐ Alaskan Native
☐ Other

Household Income (optional)

☐ Less than \$14,999
☐ \$15,000-\$24,999
☐ \$25,000-\$34,999
☐ \$35,000-\$49,000
☐ \$50,000-\$74,999
☐ \$74,000-\$99,999
☐ \$100,000 or more

Parent/Guardian Authorization I approve this application and certify that the applicant is capable of such an experience. I agree to pay the balance of camp fees by Friday at 5pm ten days prior to the start of each camp session. No refunds will be given unless the camp is cancelled by the YMCA or a doctor's authorized medical reason has been given. I understand that no refunds will be given if the child leaves early because of homesickness or disruptive behavior as determined by the Camp Director. Your child's spot is not confirmed until the weekly fee is paid in full prior to the start of the week.

By signing this form, I certify approval of good health of the camper, and, in the event that I cannot be reached in an emergency, authorize the YMCA staff/volunteers to render first aid; give permission to the physician selected by the YMCA of Metropolitan Milwaukee to hospitalize, secure proper treatment for and to order injections, anesthesia, or surgery for my child as named above. Prudent attempts will be made to contact the parent/guardian immediately. I understand in signing this form, I agree to release the YMCA of Metropolitan Milwaukee from any liability for the risks of illness, accidents or injury. I grant permission for the applicant to participate in all planned camp activities, including out-of-camp trips by walking or bus and including rock wall climbing, high ropes course, hiking and horseback riding.

The YMCA of Metropolitan Milwaukee is not responsible for lost, stolen or damaged personal articles. Permission is also given to use any video or photographs that my child may be in for future YMCA promotions. I agree to waive any claims against the YMCA and its members and volunteers to injuries or damages that may result from the conduct of other persons, including participants in the YMCA programs. I also understand that the YMCA of Metropolitan Milwaukee reserves the right to withdraw a child from the program, at the YMCA's discretion, if the enrollment of the child negatively affects the integrity of the program and/or the YMCA's legal obligations through and under the Division of Children and Family Services (DCF 252).

I understand that a copy of the Wisconsin Rules for Licensing Day Camps and the YMCA Day Camp Policy Handbook will be available for my review online at ymcamke.org.

Parent/Guardian Signature _____

Date ____ / ____ / ____



AUTOMATIC PAYMENT OPTION FORM – YMCA DAY CAMP AUTHORIZATION AGREEMENT

I hereby authorize the YMCA of Metropolitan Milwaukee to automatically charge the credit card referenced below for my child's Summer Day Camp account balance. I understand that the balance for each session of camp will be charged on the Friday 10 days prior to each session.

Further, I understand that the charge to my account will take place on a weekly basis for the camp in which my child is enrolled. It is my responsibility to check my credit card statement and report any discrepancies to the Camp Site Director within 7 days of the charge in question. I understand that I am financially responsible for all payments. Should any charge be rejected by my financial institution for any reason, I agree to be responsible for that payment and any additional late fees incurred. If full payment is not made I agree to pay for all fees associated with the collection of funds.

I understand that it is my responsibility to notify the YMCA of Metropolitan Milwaukee of any change in my credit card information, including the expiration date, and that changes must be submitted in writing at least 7 business days in advance of the draft date.

This agreement will remain in effect until YMCA of Metropolitan Milwaukee receives a written notice of cancellation from me or until the end of camp.

ACCOUNT INFORMATION

Print your name as it appears on card: _____

Credit Card Number: _____ Expiration Date: ____/____ Zip Code: _____

SIGNATURE

Authorized Signature: _____ Date: _____

Camp Location: _____ Member #: _____

Child #1 Name: _____ Child #2 Name: _____

Child #3 Name: _____ Child #4 Name: _____

Parent's Name: _____

Day Phone: () _____ Evening Phone: () _____

Wisconsin Shares Child Care Assistance and YMCA Scholarship Information

Scholarships are available based on camp capacity, demonstrated need and the YMCA's ability to fund the assistance. In order to provide the most assistance for the largest number of people, we request that you first determine whether you are eligible for child care assistance through the county in which you reside. Once approved, send us a copy of your Notice of Decision and your YMCA Day Camp registration form. **Contact your Wisconsin Shares office early as you must be approved in the online Wisconsin Shares system before we can register your child.**

If it has been determined that you are ineligible for assistance through the county program, please ask for a letter of declination and we will gladly review your eligibility for assistance through the YMCA Scholarship Program. Scholarship applications are available at the Member Service Desk at all local YMCA Centers. Applicants need to supply their most recent W-2 forms and most recent tax returns.

Contact Numbers by County

Milwaukee, Waukesha and Ozaukee County: 1-888-947-6583
Washington County: 262-335-4610

Wisconsin Shares Provider Numbers and Location IDs for State and/or County Child Care Assistance:

YMCA of Metropolitan Milwaukee
Provider Number – 1000558721

Location Numbers:

Greene Park, St. Francis – 165
Northwest YMCA – 072
Parklawn YMCA – 073
Rite-Hite Family YMCA – 012
Wilson Park – 064



**YMCA OF METROPOLITAN MILWAUKEE
ASSOCIATION OFFICES**
161 West Wisconsin Avenue, Suite 4000
Milwaukee, WI 53203
414-276-9622
ymcamke.org

Non-Profit
Organization
U.S. Postage
PAID
Milwaukee, WI
Permit No. 427

AT THE Y, WE HAVE CAMP AND SO MUCH MORE!

AQUATICS

Learn to swim at the Y! Swim lessons are offered for ages six months and older. Classes focus on water safety and comfort around water before advancing to stroke development and stroke techniques.



SCHOOL AGE

Our before and after school programs offer convenient, high quality care at an affordable price. The program includes homework help, recreational activities, arts and crafts, and a healthy snack.



FAMILY TIME

The Y is for families and your family is sure to have fun here! We offer open gym, swim time and special events throughout the year, like Healthy Kids Day coming up on April 21, 2018!



PRESCHOOL & 4K

Give your child a good start at the Y! Our preschools and 4K programs have caring and supportive teachers who create an engaging academic experience. Learning is achieved through play, small group activities, and guided learning.



YOUTH SPORTS

The Y offers Youth Sports all year long including parent and child classes, skills classes, and sports leagues. We offer basketball, volleyball, soccer and more!

