

# FALL FUN FOR EVERYONE



Celebrating  
**160**  
YEARS

1858 • 2018

For a Better Us™

## FALL 2018 PROGRAM GUIDE

### FALL 1: September 4–October 28

Member Registration: July 9  
Community Registration: July 23

### FALL 2: October 29–December 21

Member Registration: July 9  
Community Registration: Sept 17

Register online at [ymcamke.org](http://ymcamke.org)  
YMCA OF METROPOLITAN MILWAUKEE

Connect with us on:





# WELCOME TO THE Y.

# WE'RE GLAD YOU'RE HERE!

# PARTICIPATE. BELONG.

Active Older Adult Programs (age 55+) .....	44
Adaptive Program.....	24-25
Dance Classes .....	27
Early Childhood Education/Child Care .....	7-9
Family Events.....	33
Group Exercise Classes ....	36-41
Gymnastics .....	28-32
Healthy Living Programs ...	42-43
Kids Club- Youth Program .....	12
Membership Info.....	3

Safety Certifications.....	45
School Age Child Care/ Before & After School .....	10
School's Out Program.....	11
Swimming- Adult Water Exercises .....	19
Swimming- Day Care Centers & Group Lessons.....	18
Swimming Lessons .....	16-17
Swimming- Specialty Classes.....	18
Tween/Teen Programs (ages 10-17).....	26
Wellness Center & Personal Training .....	34-35
YMCA Achievers .....	14-15
YMCA Camp Minikani.....	46-47
YMCA Locations, Hours & Contacts.....	4
Youth Sports .....	21-23





# MEMBERSHIP BENEFITS

Being a part of the Y family, you'll discover that you are part of a powerful nonprofit association of men, women and children joined together by a shared commitment to nurturing the potential of kids, promoting healthy living and fostering a sense of social responsibility.

## MEMBERSHIP CATEGORIES\*

The YMCA of Metropolitan Milwaukee believes in providing membership and program services to all who desire to participate. We offer the following membership plan categories:

### HOUSEHOLD

Includes up to two adults and all dependents in the same household.

### SENIOR HOUSEHOLD

Includes up to two adults (at least one over the age of 65) and all dependents in the same household.

### ADULT

An individual age 25-64.

### SENIOR ADULT

An individual age 65 or older.

### YOUNG ADULT

An individual age 19-24.

### YOUTH/TEEN

An individual age 18 and under, no younger than 10.

## BASIC MEMBERSHIP

- Full access to all Metropolitan Milwaukee YMCAs
- Member privileges at Ys across the nation through Nationwide Membership
- Priority registration
- Wellness orientation
- Reduced fees on programs
- Dozens of free classes (Adult fitness)
- No upfront join fee

## CUSTOMIZABLE ADD-ON PLANS

The YMCA offers many customizable options to enhance your membership plan, including:

- Shower towel service
- Unlimited Kid Zone
- Kit locker with laundry (includes towels)
- Annual Giving Campaign donation
- Additional Adult Add on (designated for families with additional adults over the included limit who show proof of residency).

## CORPORATE MEMBERSHIPS

The YMCA Workplace Wellness Program is a great way for companies to promote the benefits of exercise to their employees and families. Once a company becomes involved in our program, employees will receive a free trial week. The YMCA Workplace Wellness Program also offers many other options for companies to enhance their wellness program.

## PAYMENT OPTIONS

Membership can be paid for by convenient automatic monthly drafts through either Electronic Funds Transfer (EFT) or via Visa/MasterCard. Membership can also be prepaid for 6 months or a year via Cash, Check, or Visa/MasterCard. (Returned drafts or bounced checks will be assessed a Returns Fee). Classes must be paid for at the time of registration using cash, check, MasterCard or Visa.

## Y MEMBERSHIP AND PROGRAM FINANCIAL ASSISTANCE

The YMCA's Financial Assistance Program, supported in part through contributions to the Annual Giving Campaign, provides membership and program assistance to make sure that everyone, regardless of age, income or background, has the opportunity to be healthy, confident, connected and secure.

## PROGRAM REGISTRATION INFORMATION

- Community participants must register for programs and show a building pass along with photo ID when entering a facility.
- Register early. If enrollment is low prior to class time, classes may be cut.
- If a class is not offered because of a holiday, a make-up date will not be scheduled. Fees reflect reduced rate.
- Y memberships and programs are guaranteed. If you're not satisfied with the quality of our services, we'll refund the remaining unused portion of your membership or class. (Camp deposits are nonrefundable.)
- The YMCA of Metropolitan Milwaukee does not prorate fees for late registration.
- Rates, fees and schedules are subject to change without notice.
- For their safety and protection, youth ages seven and under must be directly supervised by a parent/guardian unless enrolled in a program or checked into Kid Zone. Youth ages eight and nine years old must have a parent/guardian in the facility.

## SEVERE WEATHER POLICY

The YMCA of Metropolitan Milwaukee does not give refunds or offer make up sessions for programs that are cancelled or end early due to weather emergencies including building closings due to severe storms. Check your local news stations for the most up-to-date list of closings in case of severe weather.

## CONCEALED CARRY POLICY

The YMCA of Metropolitan Milwaukee prohibits any individual from entering our centers or remaining on our properties while carrying a concealed weapon or firearm. A concealed weapon may include a handgun, a knife (excluding switchblades), an electric weapon, or a billy club. We exercise this option for the safety of our members, program participants, volunteers and staff, and we appreciate your cooperation.

**Y MEMBERS SAVE AND/OR RECEIVE SPECIAL PRE-REGISTRATION BENEFITS**



## YMCA PLACES



**DOWNTOWN YMCA**  
161 W. Wisconsin Ave.,  
Suite 4000  
Milwaukee, WI 53203  
Phone: 414-291-9622

**OPERATIONS DIRECTOR**  
Laura Dubler

**HOURS**  
Monday-Friday:  
5:00 am-9:00 pm  
Saturday:  
6:30 am-7:00 pm  
Sunday:  
8:00 am-5:00 pm

**NORTHSIDE YMCA**  
1350 W. North Ave.  
Milwaukee, WI 53205  
Phone: 414-265-9622

**OPERATIONS EXECUTIVE**  
Rayven Peterson

**HOURS**  
Monday-Friday:  
5:00 am-9:00 pm  
Saturday:  
6:30 am-7:00 pm  
Sunday:  
8:00 am-5:00 pm

**CUSTOMER SERVICE**  
Phone: 414-274-0738  
Email: [info@ymcamke.org](mailto:info@ymcamke.org)

**PARKLAWN YMCA**  
4340 N. 46th St.  
Milwaukee, WI 53216  
Phone: 414-873-9622

**OPERATIONS DIRECTOR**  
Dwight Goodwin

**HOURS**  
Monday-Friday:  
7:00 am-8:00 pm  
Saturday:  
8:00 am-7:00 pm  
Sunday:  
1:00-5:00 pm

**RITE-HITE FAMILY YMCA**  
9250 N. Green Bay Rd.  
Brown Deer, WI 53209  
Phone: 414-354-9622

**EXECUTIVE DIRECTOR**  
Leila Wright

**HOURS**  
Monday-Friday:  
5:00 am-9:00 pm  
Saturday:  
6:30 am-7:00 pm  
Sunday:  
8:00 am-7:00 pm

**YMCA CAMP MINIKANI**  
875 Amy Belle Rd.  
Hubertus, WI 53033  
Phone: 262-251-9080

**OPERATIONS EXECUTIVE**  
Jon McLaren

**HOURS**  
Monday-Friday:  
8:00 am-5:00 pm

**NORTHWEST YMCA  
(FORMERLY JOHN C. CUDAHY  
YMCA) EARLY CHILDHOOD  
EDUCATION CENTER**  
9050 N. Swan Rd.  
Milwaukee, WI 53224  
Phone: 414-357-1920

**OPERATIONS EXECUTIVE**  
Christine Salerno

**HOURS**  
Monday-Friday:  
6:30 am-6:00 pm

**NORTHSIDE YMCA  
EARLY CHILDHOOD  
EDUCATION CENTER**  
1350 W. North Ave.  
Milwaukee, WI 53205  
Phone: 414-374-9450

**HOURS**  
Monday-Friday:  
6:30 am-6:00 pm

**YMCA GYMNASTICS CENTER**  
6140 W. Executive Dr.  
Mequon, WI 53092  
Phone: 414-357-2828

**HOURS**  
Operating hours vary based  
on class schedule





**GIVE FOR A  
BETTER US**

The Y is now...as it has always been...a place of possibility and promise for all. Unfortunately, in times when the true power of “us” is unknown to many and our bonds are fraying, we must do even more to enhance our human connections. That’s why the Y passionately focuses on strengthening communities. Every day, in Milwaukee the Y supports kids, adults, seniors and families with programs that protect, teach, connect, heal, nourish and encourage. Everything we do helps empower communities and the “us” who live in them to thrive.

We can’t do it alone.

**DONATE FOR A BETTER US.**

## YMCA MEMBERSHIP DUES OPERATE OUR CENTERS



## YOUR DONATION TO THE YMCA CHANGES LIVES



Over 900 day campers practiced reading, math, science everyday through the Y’s summer learning loss remediation program “Camp FLY.”



Over 9,000 young children, kids & teens had safe, healthy places to grow, play, and learn seven days a week.



Over 1,675 kids became academically stronger through the Y’s five-star early childhood education and before and after school programs.



Over 60,000 free, nutritious meals were served to community children and youth.



Over 4,500 kids & families learned basic swim skills and lessons in life-saving drowning prevention through “Milwaukee Swims.”





Celebrating  
**160**  
YEARS

**1858 • 2018**

**For a Better Us™**

**SAVE  
THE  
DATE**

# JOIN US AS WE CELEBRATE

**YMCA OF METROPOLITAN MILWAUKEE  
160th ANNIVERSARY CELEBRATION  
NOVEMBER 7, 2018 | MILWAUKEE ART MUSEUM**

**FOR 160 YEARS**, the YMCA of Metropolitan Milwaukee has strengthened the foundations of our community by putting Christian principles into practice through programs that build a healthy spirit, mind and body for all.

Our vision is to achieve bold results in the areas of youth development, healthy living, and social responsibility for area families. Our impact in Milwaukee is lasting and widespread, from teaching thousands of kids to swim each year, to being one of the only safe spaces open seven-days-a-week in the neighborhoods we serve.

Tickets are now on sale! Visit our website [ymcamke.org](http://ymcamke.org) to purchase your tickets today!

**SPONSORSHIP QUESTIONS?** For questions about sponsorship of the YMCA of Metropolitan Milwaukee 160th Anniversary Celebration, please contact Shana Piaskoski at 414-274-0753 or [spiaskoski@ymcamke.org](mailto:spiaskoski@ymcamke.org).



# EARLY CHILDHOOD EDUCATION



## IN GOOD HANDS

The Y's Early Childhood Education Centers feature a 5-Star rating from YoungStar and the National Accreditation Commission for Early Care and Education Programs (NAC), and are the premier child care facilities in the metro Milwaukee area.

## A PLACE JUST RIGHT FOR THEM, AND FOR YOU!

**Ages 6 weeks–5 years**



So much more than child care, the YMCA Early Childhood Education Program supports the social-emotional, cognitive and physical development of the youngest learners. With so many demands on today's families and the increased focus on early brain development, families need all the support they can get to nurture the potential of youth. That's why early childhood education programs at the Y focus on holistically nurturing child development by providing a safe and healthy place to learn foundational skills, develop healthy, trusting relationships and build self-reliance through the Y values of caring, honesty, respect and responsibility.

### WHY CHOOSE THE Y?

- Small class sizes
- 5-Star rated program by YoungStar
- Nationally accredited program
- Assessments and screenings for development support and early intervention
- State licensed, Tax-deductible
- We strive to meet the developmental needs of each child
- Supportive of experiential learning and guided discovery
- Parent teacher conferences allow for you to learn about your child's development in a whole new way!
- Offer Early Head Start for infant to 2½ years old if qualifications are met
- Offer preschool K3 and K4
- Children enrolled in 5 full days per week receive a free Family Membership to the YMCA.\*

\*Accounts must be in good standing with no past-due balances.

### YMCA EARLY CHILDHOOD EDUCATION CENTERS:



**Northside YMCA Early Childhood Education Center (5-Star Rated)**  
1350 W. North Ave., Milwaukee  
414-374-9450



**Northwest Early Childhood Education Center (5-Star Rated)**  
9050 N. Swan Rd., Milwaukee  
414-357-1920

**YMCA K3 at Sherman Park Lutheran Early Childhood Education Center (4-Star Rated) (School year program only)**  
2703 N Sherman Blvd., Milwaukee  
414-357-1901

**YMCA Nature Preschool at Camp Minikani (School year program only)**  
875 Amy Belle Rd., Hubertus  
414-357-1901



# EARLY CHILDHOOD EDUCATION

.....  
"For our family, the YMCA's Early Childhood Education Center has been a godsend! The administrators are compassionate and supportive. I've appreciated the diversity offered from the teachers to the children in the program. The YMCA's commitment to community engagement ensures that children of different races and socio-economic status are given the same opportunities in the same nurturing environment.

I cannot overemphasize the value our family has found in the YMCA Early Childhood Education Center program. The facilities are second to none, the teachers are loving, the community is enriching, and the program is exceptional."

– EARLY CHILDHOOD EDUCATION PARENT  
.....

## EARLY HEAD START

### Infant to 2 ½ years old

Enroll your child in the Early Head Start Partnership Program for the best start in life. We promote and provide:

- Healthy development for your child
- Meaningful parent involvement
- Low child-to-teacher ratios
- Continuous, comprehensive care and superior early childhood curricula
- Free diapers and wipes when at the center

All children must be under 2 ½ years of age with a child care subsidy and meet eligibility requirements for enrollment. The Early Head Start Partnership Program for infants and toddlers is made possible through a partnership with Next Door and through a federal Early Head Start Child Care Partnership grant.

For questions about the Northside YMCA Early Childhood Education Center call 414-374-9450.

For questions about the Northwest Early Childhood Education Center call 414-357-1920.  
.....



## YMCA K3 AT SHERMAN PARK LUTHERAN SCHOOL

### (4-STAR RATED)

**Must be 3 years old by Sept. 1 and be fully toilet trained to enroll**

Looking to ensure your child is prepared for kindergarten? Enroll today for fall 2018-19. Located at Sherman Park Lutheran School this K3 program prepares children and families for a successful transition into K4. Highly qualified teachers support academic and social-emotional development. This 4-Star Rated program follows the Sherman Park Lutheran LUMIN school calendar and is not open when school is out of session.

- School hours are 8:00am-3:30pm; care is available 7:00am-5:00pm, Monday through Friday
- State licensed child care
- Accept state/county child care assistance (WI Shares/W2)
- Child must be 3 by September 1 to enroll for fall. Additional openings may be available if your child turns 3 after September 1 – call for availability

Will enroll during the school year if your child is 3 years old, fully toilet trained and spots are available.  
.....

For more information on registering, please call 414-357-1905.  
.....







# EARLY CHILDHOOD EDUCATION



**ENROLL  
TODAY!**

**NOW ENROLLING FOR  
2018-2019 SCHOOL YEAR  
RESERVE YOUR CHILD'S SPOT TODAY!**

## YMCA NATURE PRESCHOOL AT CAMP MINIKANI

**Ages 3-5 years**

**OPENINGS AVAILABLE FOR  
CURRENT SCHOOL YEAR**

**NOW ENROLLING FOR 2018-19  
SCHOOL YEAR – RESERVE YOUR  
CHILD'S SPOT TODAY!**

### **Program runs:**

September 5, 2018 – June 11, 2019  
Monday through Friday  
8:15am-12:30pm

Partial weeks available:

- 2 days/week: \$75
- 3 days/week: \$110
- 5 days/week: \$175

## COME TRY US OUT!

Check us out during our FREE Family  
Activity Session and Open House.

September 21 5:00-6:00pm

October 26 5:30-6:30pm

November 1 5:00-6:00pm

December 8 9:00-10:00am

**CAN'T MAKE IT?  
WE'D LOVE TO HAVE YOU  
SCHEDULE A VISIT AND  
TRY US OUT!**

In a world where children are spending less time outdoors, our nature preschool allows children the hands-on opportunity to explore the world around them. Located at the beautiful YMCA Camp Minikani, children will spend the majority of class time outside engaging in experiential learning and guided discovery. Children must be dressed to be outdoors year-round. Children must be fully potty trained to enroll. From habitats to gardening and so much more in between – nature based learning has never been more fun!

Did you know that regular time in nature...\*

- Facilitates better social and emotional development
- Improves fitness, motor-skills and well being
- Supports creativity and imaginative play
- Inspires collaboration and reduces violence and bullying
- Reduces stress
- Creates feelings of empathy for nature

\*Taken from natureexplore.org

**"There just aren't enough words to summarize the great experience that my son had at YMCA Nature Preschool. It's exciting when your child wakes up every day eager to go to school and learn. The best part about it was that he didn't realize he was learning at all! I would highly recommend this program to anyone who is looking; you certainly won't be disappointed!"**

**– EMILY L.**



**Interested in full time care options, contact  
Christine Salerno at 414-357-1901 for  
more information.**



# BEFORE & AFTER SCHOOL



## BRIGHT FUTURES

Y Before & After School programs serve school-aged children with a variety of activities to explore and develop their interests and talents.

"I wanted to thank you so much for the wonderful care you and your team are providing for our son this year! He is so happy to come to before and after school class with you. It means so much to us that he is consistently getting a great positive start and end to his school day! He loves all your fun activities and is learning socially appropriate choices too, through your program and your encouragement!"

— ELEMENTARY SCHOOL PARENT

# SCHOOL AGE EDUCATION PROGRAMS

PLAY & EXCEL BEFORE & AFTER THE BELL  
(Ages 4–13 years, varies by location)

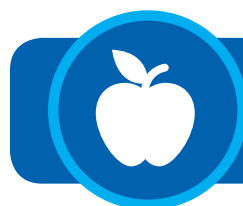
Our School Age Before & After School Program is a tax-deductible, licensed childcare that takes place before and/or after your child's school day. Led by qualified, caring staff, with most of our before/after school programs located right at your child's school, you have peace of mind that your child is in good hands.

## WHY CHOOSE YMCA BEFORE/ AFTER SCHOOL PROGRAMS?

- **Flexible Scheduling.** 2–5 days of care available per week—morning care, afternoon care or both. (4K Wraparound Care available at some locations)
- **It's Affordable.** Tax-deductible. 10% additional child discounts available. My WI Child Care EBT/state and county benefits accepted. Applications for scholarships are available upon request.
- **It's Fun.** Children are physically active and participate in arts and crafts, games and other activities. Homework time and help is provided.
- **It's Safe.** All of our School Age Programs are licensed by the state of Wisconsin, meeting and exceeding their guidelines.
- **Quality Staff.** Our staff receives on-going training throughout the year. They are certified in CPR, AED and First Aid, and model the Y's four Core Values of caring, honesty, respect and responsibility!
- **It's Convenient.** Extra care is provided on Early Release and School's Out Days at various locations and Y Centers. Please visit website for more information.

## LOCATIONS/ DISTRICTS SERVED

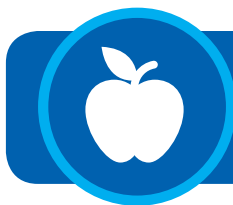
- Rite-Hite Family YMCA (4K Wraparound)  
Brown Deer, Milwaukee Public and Private Schools
- Brown Deer
- Eastbrook Academy
- Fox Point-Bayside (4K Wraparound)
- Hamilton (4K Wraparound)
- Hope Christian Schools: Caritas, Fidelis, Fortis, Prima, Semper
- Messmer Preparatory Catholic School: St. Mary, St. Rose
- Rocketship South, Rocketship North
- Sherman Park Lutheran
- South Milwaukee (4K Wraparound)
- St. Augustine Preparatory Academy
- St. Francis (4K Wraparound)
- Stellar Collegiate Charter
- Whitnall
- Additional private and parochial locations



For registration forms and additional information, please visit [ymcamke.org](http://ymcamke.org), email [schoolage@ymcamke.org](mailto:schoolage@ymcamke.org), or call 414-276-9622.



# SCHOOL'S OUT PROGRAM



For more information and updates, please visit [ymcamke.org](http://ymcamke.org), email [schoolage@ymcamke.org](mailto:schoolage@ymcamke.org) or call 414-274-0756.

## NO SCHOOL, NO PROBLEM! WHEN SCHOOL IS OUT, CAMP IS IN! (Serving 4–13 years old)

Camp-Is-In is a full-day program for children ages 4–13, that is offered when many local schools are not in session. Enroll your child for a fun-filled day of games, crafts, activities and time with friends. Dress in tennis shoes to be active, and bring a bag lunch, swimsuit and towel (swimming may take place at Rite-Hite Family YMCA and Northside YMCA). For questions or to register please call 414-274-0759 or email [schoolage@ymcamke.org](mailto:schoolage@ymcamke.org).

Registration forms that include dates when the program is available can be found for each site online ([ymcamke.org](http://ymcamke.org)), at YMCA Centers and at all School Age locations.

Pre-registration and payment for each School's Out Day is required a minimum of six business days in advance. MY WI CHILD CARE EBT/state and county benefits accepted. For more payment information see our flyer or visit our website.

School's Out, Camp-Is-In Days are offered at the following locations:

- Rite-Hite Family YMCA: serving all school districts
  - Northside YMCA: serving all school districts
  - Deer Creek Intermediate: serving St. Francis School District
  - Maple Elementary: serving Sussex Hamilton School District
  - YMCA Camp Minikani: serving all school districts
  - Parklawn YMCA: serving all school districts
  - Rawson Elementary: serving South Milwaukee School District
  - Stellar Collegiate: serving Stellar Collegiate Families
  - Additional locations may be added
- Please note: Dates vary by location.



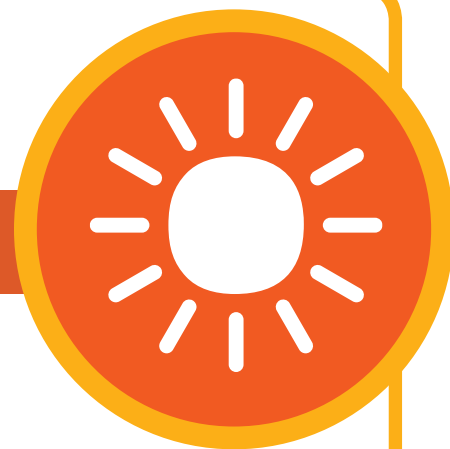
# DAY CAMP

DISCOVER. IMAGINE. GROW.

# THANK YOU

FOR AN INCREDIBLE SUMMER!

Looking for care when school is not in session? This entire year, when School is Out, Camp is In! Registration begins in September!





# YOUTH PROGRAMS



## BRIGHT BEGINNINGS

At the Y, we work every day to help children and their parents set and achieve personal and educational goals. As a result, hundreds of children throughout Milwaukee County gain confidence as they recognize the Y as a place where they belong and can feel comfortable exploring new interests and passions.

## KIDS CLUB

**ENROLL NOW!**

Space is limited!

2018-2019 SCHOOL YEAR  
PRESCHOOL OFFERED AT RITE-HITE FAMILY YMCA

Kids Club is a progressive preschool program divided into a series of four classes. Each class uses age appropriate activities to help children develop academically, grow socially, master skills, make friends and become comfortable in a classroom setting.

A non-refundable deposit of \$35 for those who register prior to August 1, 2018 and \$50 for registrations received after that date.

### KIDS CLUB 2

September 11, 2018–May 16, 2019

Child must be 2 by September 30

Children are introduced to “circle time” in this 1.5 hour class as well as arts and crafts, stories, songs, and number and letter recognition. Children who are not yet potty trained are welcome to participate in class; however, we request that parents remain in the vicinity of the classroom, just in case.

Tuesdays/Thursdays 9:15-10:45am  
**Y Member:** \$648  
(9 months) = \$72/month  
**Community Participant:** \$972  
(9 months) = \$108/month

### KIDS CLUB 3 AND 4

September 10, 2018–May 15, 2019

Child must be 3 by September 30

Children will enjoy this two-hour class filled with action packed fun. Academic challenges continue for your child in an age appropriate matter. Letter and word recognition, number skills and independence are just a few of the skill building opportunities that will be offered. Whether your child's next step is Kid's Club 4, or K4 or K5 in their local school, they will get the tools they need to succeed in this class.

Mondays/Wednesdays 9:15-11:15am  
**Y Member:** \$855  
(9 months) = \$95/month  
**Community Participant:** \$1125  
(9 months) = \$125/month

### MUSICAL TUESDAYS

September–May

Ages 3 and up

Musical Tuesdays will give traditional Kids Club a musical focus. Children will learn about the instruments of the orchestra, get exposure to many kinds of music, sing and move, and play instruments. This will take place in the context of social games and activities, arts and crafts, counting, and letter recognition.

Tuesdays 9:15-11:15am  
**Y Member:** \$504  
(9 months) = \$56/month  
**Community Participant:** \$756  
(9 months) = \$84/month

### STEM THURSDAYS

September–May

Ages 3 and up

Discover how the STEM (science, technology, engineering, and math) disciplines can be accessible at an early age. Children will do experiments and learn how to predict results, discover how things work, explore building in many mediums, and develop the foundations of math skills. Emphasis will be on problem solving, working in a group, and having fun!

Thursdays 9:15-11:15am  
**Y Member:** \$504  
(9 months) = \$56/month  
**Community Participant:** \$756  
(9 months) = \$84/month

### FUN DAY FRIDAYS

September–May

Ages 3 and up; may join at any time throughout the school year

Continue the learning and fun with an additional day. This supplemental class will include outdoor activities, gym time, science, art and cooking projects. Please bring a lunch, the kids will eat together each week.

Fridays 9:15-11:15am  
**Y Member:** \$504  
(9 months) = \$56/month





## OUR COMMITMENT TO DIVERSITY, INCLUSION & EQUITY

We believe the Y must continue to lead the way to a brighter future by following our belief that we are stronger when our doors are open to all. Our policies, practices and programs must advance our organizational commitment to diversity and inclusion. We must sustain our support for newcomers and immigrants, in partnership with our colleagues at Ys in 120 countries. We must ensure that all people — across all dimensions of diversity — feel welcome and valued as part of the Y family.





# YMCA ACHIEVERS



## CONTINUING THE LEGACY

The YMCA Achievers Program is a national college readiness initiative designed to help teens of color set and pursue higher education and career goals. The possibilities are endless!

At the Y, we believe all children and teens deserve the opportunity to discover their potential. The YMCA of Metropolitan Milwaukee is one of 250 Achievers programs in the country that helps teens explore, set and pursue educational and career goals; raise their academic standards; develop a positive sense of self; and connect with professionals who can offer guidance and encouragement.

The YMCA Achievers Program reaches into the heart of the community for both its adult and teen Achievers. By recognizing and utilizing the talents of professionals of color who are successful in their careers, the program brings inspiration and positive influences into the lives of teen Achievers.

The YMCA Achievers program runs September through June and is operated out of the following YMCA Branches:

### **Northside YMCA**

1301 W. North Avenue  
Milwaukee, WI 53205

Program meets:

1st & 2nd Thursday of the month  
5:30-7:45pm

### **Parklawn YMCA**

4340 N. 46th Street  
Milwaukee, WI 53216

Program meets:

1st & 2nd Thursday of the month  
5:30-7:45pm

### **Rite-Hite Family YMCA**

9250 N. Green Bay Road  
Brown Deer, WI 53209

Program meets:

1st & 2nd Wednesday of the month  
5:30-7:45pm

### **West Suburban YMCA**

2420 N. 124th Street  
Wauwatosa, WI 53226

Program meets:

1st & 2nd Tuesday of the month  
5:30-7:45pm

For more information please visit [ymcamke.org](http://ymcamke.org) or call the YMCA Achievers office at 414-374-9442.



Are you a former teen Achiever? Or a former adult Achiever? Do you represent a corporation that would like to partner with us? We would like to hear from you!

Please contact Vice President, Social Responsibility & Strategic Partnerships, Shaneé Jenkins at 414-374-9401 or [sjenkins@ymcamke.org](mailto:sjenkins@ymcamke.org).

## VISION

To be the leading resource in preparing young people for their futures, by providing leadership experiences for existing and emerging community leaders and increasing the community investment by local businesses and organizations.

## PURPOSE

To help teens of color set and pursue high educational and career goals resulting in high school graduation and acceptance into and graduation from an institution of higher learning and successful entry into a career of their choosing.

## MISSION

To support and encourage youth of color in the areas of academics, career exploration, college preparation and leadership development.



# YMCA ACHIEVERS

## BLACK COLLEGE TOUR

The Black College Tour is an annual trip that provides an opportunity for high school students to visit a number of historical black colleges and universities throughout the country, with the hope of peaking their interest for enrollment. The tour is geared toward students in the 9-11th grade. Each year the itinerary changes but some of the regular stops include: Howard, Spelman, Xavier and many more!

Fee:

**YMCA Achiever Students: \$450**

**Community Students: \$550**

Complete application which includes interview, two letters of recommendation, current transcripts and application fee (\$25).

For more information visit [ymcamke.org/black-achievers-activities/](http://ymcamke.org/black-achievers-activities/).

## STRATEGIC PARTNERSHIPS

Thank you for your partnership in ensuring our outreach aligns with our goal to be a healthier, stronger, and safer Milwaukee! Our goal is to continue to cultivate and steward relationships with community partners including elected officials, corporate leaders, school officials, and community organizations throughout the neighborhoods we serve; to ensure access, inclusion and engagement for all.

Do you represent an organization whose mission aligns with the Y and are interested in partnering? If so, we would love to speak with you to discuss ways in which we can work together.

Please contact Shanee' Jenkins; Vice President, Social Responsibility & Strategic Partnerships at [sjenkins@ymcamke.org](mailto:sjenkins@ymcamke.org) or 414-374-9401.



## OUR ULTIMATE GOAL

We prepare youth for life beyond high school.



### ACADEMICS

- Youth are equipped with the skills needed to be accepted into and excel at college.
- Youth have access to high-quality enrichment opportunities.



### COLLEGE KNOWLEDGE

- Youth have the knowledge and support necessary to complete the college admissions process.
- Youth feel they have options for their future.
- Youth understand how to secure financial assistance and select the right school for them.



### POSITIVE RELATIONSHIPS

- Youth have support from an adult who has gone through the college process.
- Youth have an opportunity to build positive relationships with other youth who have a college aspirations.



### LIFE SKILLS

- Youth have the non-cognitive skills that predict long-term success in life, including goal-directed behavior, self management, personal responsibility, and the ability to work as a team.



### POSITIVE IDENTITY

- Youth have a positive vision for the future and believe they can be successful.
- Youth identify as successful students in the present and future, setting and working toward goals with support from peers and adults in their lives.

## STRENGTHENING THE Y'S FOUNDATION TO MAXIMIZE IMPACT

### MEASURED BY:

- GPA
- Academic self-efficacy
- Self-management

### MEASURED BY:

- College aspirations

### MEASURED BY:

- Social capital

### MEASURED BY:

- Self-management
- Social skills

### MEASURED BY:

- Academic self-efficacy
- Positive identity



# SWIMMING



## MAKE A SPLASH

The YMCA of Metropolitan Milwaukee is proud to offer the nationally recognized YMCA Swim Lesson Program, which helps keep kids safe in and around water.

Our new swim lesson stages emphasize a progressive approach to skill building, helping our students progress with a sense of achievement as they practice their new swim skills.

FALL 1: SEPTEMBER 10 – OCTOBER 28 • FALL 2: OCTOBER 29–DECEMBER 21  
\*NO CLASSES THURSDAY, NOVEMBER 22\*

## LESSON SELECTOR

### WHAT AGE GROUP DOES THE STUDENT FALL INTO?



6 months–3 years  
**PARENT\* & CHILD:**  
STAGES A–B



3 years–5 years  
**PRESCHOOL:**  
STAGES 1–4



5 years–12 years  
**SCHOOL AGE:**  
STAGES 1–6



12+ years  
**TEEN & ADULT:**  
STAGES 1–6

All age groups are taught the same skills but divided according to their developmental milestones.

### WHICH STAGE IS THE STUDENT READY FOR?

Can the student respond to verbal cues and jump on land?

NOT YET

**A / WATER  
DISCOVERY**

Is the student comfortable working with an instructor without a parent in the water?

NOT YET

**B / WATER  
EXPLORATION**

Will the student go underwater voluntarily?

NOT YET

**1 / WATER  
ACCLIMATION**

Can the student do a front and back float on his or her own?

NOT YET

**2 / WATER  
MOVEMENT**

Can the student swim 10–15 yards on his or her front and back?

NOT YET

**3 / WATER  
STAMINA**

Can the student swim 15 yards of front and back crawl?

NOT YET

**4 / STROKE  
INTRODUCTION**

Can the student swim front crawl, back crawl, and breaststroke across the pool?

NOT YET

**5 / STROKE  
DEVELOPMENT**

Can the student swim front crawl, back crawl, and breaststroke across the pool and back?

NOT YET

**6 / STROKE  
MECHANICS**

\* At the Y, we know families take a variety of forms. As a result, we define parent broadly to include all adults with primary responsibility for raising children, including biological parents, adoptive parents, guardians, stepparents, grandparents, or any other type of parenting relationship.

Register online at [ymcamke.org](http://ymcamke.org)





# SWIMMING

## STAGE DESCRIPTIONS

### SWIM STARTERS

Accompanied by a parent, infants and toddlers learn to be comfortable in the water and develop swim readiness skills through fun and confidence-building experiences, while parents learn about water safety, drowning prevention, and the importance of supervision.

#### YMCA Swim Lessons Water Discovery



A

#### A / WATER DISCOVERY

Parents accompany children in stage A, which introduces infants and toddlers to the aquatic environment through exploration and encourages them to enjoy themselves while learning about the water.

#### YMCA Swim Lessons Water Exploration



B

#### B / WATER EXPLORATION

In stage B, parents work with their children to explore body positions, floating, blowing bubbles, and fundamental safety and aquatic skills.

#### YMCA Swim Lessons Water Acclimation



1

#### 1 / WATER ACCLIMATION

Students develop comfort with underwater exploration and learn to safely exit in the event of falling into a body of water in stage 1. This stage lays the foundation that allows for a student's future progress in swimming.

#### YMCA Swim Lessons Water Movement



2

#### 2 / WATER MOVEMENT

In stage 2, students focus on body position and control, directional change, and forward movement in the water while also continuing to practice how to safely exit in the event of falling into a body of water.

#### YMCA Swim Lessons Water Stamina



3

#### 3 / WATER STAMINA

In stage 3, students learn how to swim to safety from a longer distance than in previous stages in the event of falling into a body of water. This stage also introduces rhythmic breathing and integrated arm and leg action.

### SWIM BASICS

Students learn personal water safety and achieve basic swimming competency by learning two benchmark skills:

- Swim, float, swim—sequencing front glide, roll, back float, roll, front glide, and exit
- Jump, push, turn, grab

#### YMCA Swim Lessons Stroke Introduction



4

#### 4 / STROKE INTRODUCTION

Students in stage 4 develop stroke technique in front crawl and back crawl and learn the breaststroke kick and butterfly kick. Water safety is reinforced through treading water and elementary backstroke.

#### YMCA Swim Lessons Stroke Development



5

#### 5 / STROKE DEVELOPMENT

Students in stage 5 work on stroke technique and learn all major competitive strokes. The emphasis on water safety continues through treading water and sidestroke.

#### YMCA Swim Lessons Stroke Mechanics



6

#### 6 / STROKE MECHANICS

In stage 6, students refine stroke technique on all major competitive strokes, learn about competitive swimming, and discover how to incorporate swimming into a healthy lifestyle.

### SWIM STROKES

Having mastered the fundamentals, students learn additional water safety skills and build stroke technique, developing skills that prevent chronic disease, increase social-emotional and cognitive well-being, and foster a lifetime of physical activity.

**HAVE MORE QUESTIONS?** Our front-desk staff is available to answer any questions about the swim lessons program.



# SWIMMING

## DAY CARE/GROUP SWIMMING LESSONS

### DAY CARE/GROUP SWIMMING LESSONS

We work directly with area day care centers to provide swimming lessons to the children enrolled in their care. Lessons are taught in our shallow water instructional areas. Ask your child's day care if they work with our YMCA for swimming lessons if they don't ask them to call us for more details.

**For more information, please contact the Aquatics Director.**

**Northside YMCA Aquatics Dept.**  
414-374-9434

**Rite-Hite Family YMCA Aquatics Dept.**  
414-357-2834

### DAYTIME/HOME SCHOOL SWIMMING LESSONS

We offer convenient daytime swimming lessons for those that have little ones in morning preschool classes or those that are home schooling their children. These lessons run with our YMCA program sessions.

**For more information, please contact the Aquatics Department:**

**Northside YMCA Aquatics Dept.**  
414-374-9434

**Rite-Hite Family YMCA Aquatics Dept.**  
414-357-2834

Ages 3–5 years (30 minute lesson)

Ages 6–9 years (30 minute lesson)

Ages 10–16 years (30 minute lesson)

## SPECIALTY AQUATICS

### AQUATIC CONDITIONING

#### Northside YMCA and Rite-Hite Family YMCA

Aquatic Conditioning is a competitive pathway students can pursue following YMCA Swim Lessons. The program focuses on continuing to build endurance and stroke technique on all major competitive strokes and encourages swimming as part of a healthy lifestyle.

**Pre-requisite:** Completed or able to perform skills from Stage 6: Stroke Mechanics

### LIFEGUARD READINESS CLASS

#### Northside YMCA

Ages 12 – 16 Years

This course is designed to build a foundation of knowledge and skills for potential future lifeguards. It is an effective transition from the upper-level swim lesson program to a professional lifeguard.

### PRIVATE SWIMMING LESSONS

#### Northside YMCA and Rite-Hite Family YMCA

Ages 3 years – older adults

Personalized one-on-one instruction for individuals looking to get to the next swimming level, improve technique or get ready for a Triathlon/Iron Man competition. Your instructor will work at your pace toward your goals. Please contact the Aquatics Department directly to schedule your lessons.

Four 30-minute lessons

**Y Member:** \$100

**Community Participant:** \$150

### SEMI-PRIVATE SWIMMING LESSONS

#### Northside YMCA and Rite-Hite Family YMCA

Ages 3+ years

Semi private lessons provide personalized instruction for two individuals. Your instructor will work with you and one additional friend at your pace and toward your goals. Lessons are offered in packages of four 30 minute lessons. Please contact the Aquatics Department directly to schedule your lessons.

Four 30-minute lessons

**Y Member:** \$120/pair

**Community Participant:** \$180/pair

### POOL SIDE BAPTISMS

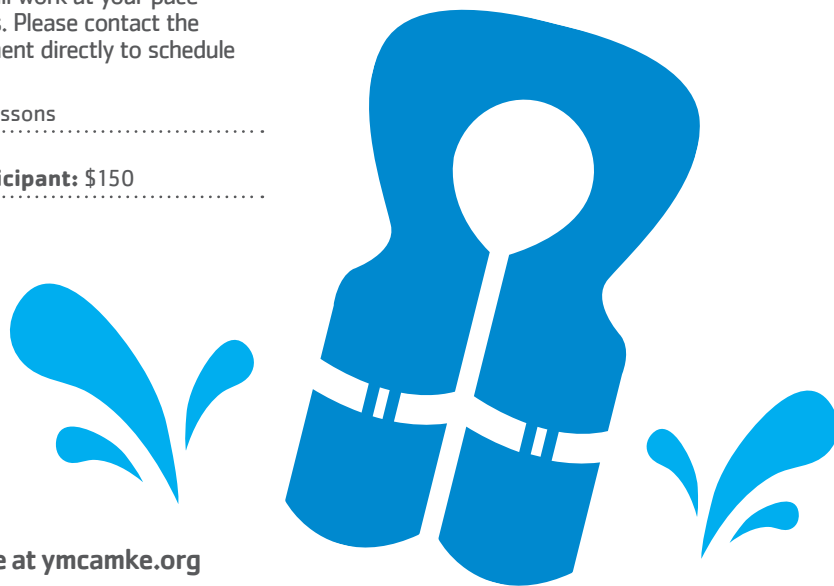
#### Northside YMCA and Rite-Hite Family YMCA

Keeping in touch with our Christian roots, the Northside YMCA provides an accessible pool space for baptisms. Our facilities offer warm, shallow water depth for this service. We have worked with several large and small groups throughout the community, providing a safe and enjoyable space for every baptism.

For more information, please contact the Aquatics Director.

**Northside YMCA Aquatics Department**  
414-374-9434

**Rite-Hite Family YMCA Aquatics Department**  
414-357-2834





FALL 1: SEPTEMBER 10 – OCTOBER 28 • FALL 2: OCTOBER 29–DECEMBER 21

\*NO CLASSES THURSDAY, NOVEMBER 22\*

# SWIMMING

## WATER EXERCISE CLASSES

### MS/STROKE RECOVERY WATER EXERCISE

#### LOW IMPACT/REHAB

##### Rite-Hite Family YMCA

Ages 14+ years

This class is a stretching/exercise class for those individuals that have physical limitations including but not limited to loss of movement, muscle stiffness and joint restrictions. It is great for those with MS, recovering from a stroke, fibromyalgia or spinal injury. If you need assistance in the locker room or getting into and out of the pool please bring an aid.

**Y Member:** \$5

**Community Participant:** See posted schedule at your branch for class fees.

### JOINT MOVEMENT

(formerly known as AFYAP)

#### LOW INTENSITY/REHAB

##### Rite-Hite Family YMCA

Ages 14+ years

An aquatic exercise program designed for people with arthritis and related conditions. The water provides gentle resistance to build muscle strength and support joints to encourage free movement. Participants should be comfortable in the water but do not need to have swimming skills. Please check with your physician before beginning this program.

**Y Member:** \$5

**Community Participant:** See posted schedule at your branch for class fees.

### SHALLOW WATER EXERCISE

#### MODERATE INTENSITY

##### Northside YMCA and Rite-Hite Family YMCA

Ages 14+ years

Make the most of the resistive qualities of water to help increase your flexibility, cardio fitness level and muscle strength. Perfect for first-time exercisers, currently active or those looking for a good workout. This class is taught in chest deep water. Participants should be comfortable in the water but do not need to have swimming skills.

**Y Member:** FREE

**Community Participant:** See posted schedule at your branch for class fees.

### DEEP WATER EXERCISE

#### MODERATE INTENSITY

##### Rite-Hite Family YMCA

Ages 14+ years

A powerful workout that will improve your posture, strength and cardiovascular endurance. This non-impact exercise is a perfect alternative for individuals with knee or back problems or those looking for a break from running or high impact activities. Participants should be comfortable in deep water.

**Y Member:** FREE

**Community Participant:** See posted schedule at your branch for class fees.

This class is taught in the WSAC pool which is a cold water pool (average temp of 80 degrees or cooler).

### AQUA ZUMBA

#### MODERATE-HIGH INTENSITY

##### Rite-Hite Family YMCA

Ages 14+ years

Jump into the Latin-Inspired, easy to follow, calorie-burning, dance fitness party that makes working out a splash. This program is a safe, effective and challenging workout that integrates the Zumba formula and philosophy into traditional aqua fitness, moving against the resistance of the water.

**Y Member:** \$10

**Community Participant:** See posted schedule at your branch for class fees.

### INDOOR POOL SEVERE WEATHER POLICY

It is the policy of the YMCA of Metropolitan Milwaukee that when there is a Severe Weather Warning in effect the indoor pools will close. The pool will remain closed until the severe weather warning has ended. The YMCA of Metropolitan Milwaukee will not give refunds or offer make up sessions for programs that are cancelled or end early due to weather emergencies. Facility management reserves the right to close indoor pools for thunder and lightning at their discretion.

### WINTER WEATHER POLICY

The YMCA of Metropolitan Milwaukee does not give refunds or offer make up sessions for programs that are cancelled or ended early due to weather emergencies including building closings due to severe winter storms. Check your local news stations for the most up-to-date list of closings in case of severe weather.





# MAKE A DIFFERENCE

## VOLUNTEER WITH THE Y

Taking time to help others in the community by sharing your time, skills and passion can offer many of the following experiences and benefits:

- Gain new skills
- Build confidence
- Enhance leadership skills
- Make new friends and acquaintances
- Receive valuable work experience
- Serve as a mentor
- Strengthen communication skills
- Support your community

## IT'S EASY TO BECOME A VOLUNTEER FOR THE Y!

Download an application at **YMCAMKE.ORG** or contact our volunteer coordinator at **VOLUNTEER@YMCAMKE.ORG** to learn more about the fun volunteer opportunities at a location near you.



**"Our students enjoy volunteering with the YMCA of Metropolitan Milwaukee because it empowers them as leaders....and it teaches them how we are so much more alike than we are different. Students literally buzz for days or weeks after volunteering with the YMCA of Metropolitan Milwaukee."**

**-WILL, UNIVERSITY SCHOOL TEACHER**





# YOUTH SPORTS



## TAKING THE SHOT

The Y's Youth Sports programs use fun and exciting activities to develop sports skills in emerging athletes. Each program utilizes curriculum that teaches the skills of the sport, along with health and wellness concepts.



### SAVE WITH EARLY BIRD PRICING!

FALL 1: REGISTER  
BY AUGUST 21

FALL 2: REGISTER  
BY OCTOBER 15

## BASKETBALL

### BASKETBALL SKILLS AT RITE-HITE FAMILY YMCA

Ages 4-12 years

Learn the basic rules and skills necessary to play the game of basketball. Participants will learn the skills of dribbling, passing, shooting and defense then use those skills in game settings.

Fall 1 and Fall 2 Sessions

K4-K5

Saturdays 10:15-11:00am

6-12 years

Saturdays 11:00am-Noon

Early Bird Pricing:

**Y Member:** \$45

**Community Participant:** \$60

Open Registration Pricing:

**Y Member:** \$50

**Community Participant:** \$65

### CO-ED BASKETBALL AT NORTHSIDE YMCA

Ages 5-12 years

Practices will focus on dribbling, passing, shooting, defense and basic rules of the game. Sessions may lead up to game play.

Schedules will be available after registration is complete.

Fall 1 and Fall 2 Sessions

**Y Member:** \$30

**Community Participant:** \$40

### GIRLS BASKETBALL AT NORTHSIDE YMCA

Ages 10-17 years

Practices will focus on dribbling, passing, shooting, defense and basic rules of the game. Sessions may lead up to game play.

Schedules will be available after registration is complete.

Fall 1 and Fall 2 Sessions

**Y Member:** \$30

**Community Participant:** \$40

### BASKETBALL LEAGUES AT PARKLAWN YMCA

Ages 8-14 years

Game play in a friendly environment. Practice and coaching are not included; games are played once per week.

Registration is done by team. Trophies, plaques or ribbons are awarded to the 1st and 2nd place teams.

Schedules will be available after registration is complete.

Fall 1 and Fall 2 Sessions

Parklawn YMCA

5th-6th Grade: \$150

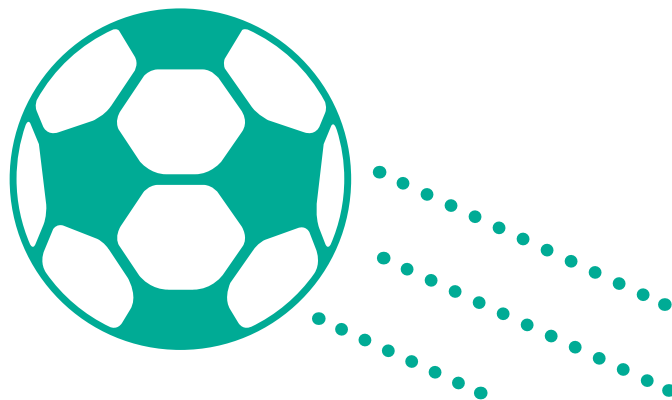
7th-8th Grade: \$150



Class schedules are posted online at [ymcamke.org/schedules](http://ymcamke.org/schedules) and available at the Y.



# YOUTH SPORTS



## SOCCER SKILLS

### SOCCER SKILLS AT RITE-HITE FAMILY YMCA

Ages 3-12 years (classes broken into age appropriate groups)

Dribble, pass and shoot your way towards the net. This session will teach your child the key fundamentals of soccer; dribbling, passing, shooting and teamwork. First time players and experienced players are all welcome.

#### Fall 1 Session Only

Rite-Hite Family YMCA Sports Field

\*spectators are encouraged to bring chairs, no seating provided

3-5 years

Saturdays 10:00-11:00am

6-12 years

Saturdays 10:00-11:00am

#### Early Bird Pricing:

**Y Member:** \$45

**Community Participant:** \$60

#### Open Registration Pricing:

**Y Member:** \$50

**Community Participant:** \$65

### SOCCER SKILLS AT PARKLAWN YMCA

Ages 6-9 years (classes broken into age appropriate groups)

Practices will focus on rules of the game, basic positions, and lots of touches on the ball with shooting. Small sided game play will be included in each practice. Fundamentals of soccer will be taught with numerous fun games. First time players and experienced players are all welcome.

#### Fall 2 Session Only

Northside YMCA

3-5 years

Saturdays 10:00-11:00am

6-12 years

Saturdays 10:00-11:00am

#### Early Bird Pricing:

**Y Member:** \$35

**Community Participant:** \$47

#### Open Registration Pricing:

**Y Member:** \$30

**Community Participant:** \$40

## SOCCER CLINIC

Ages 6-9 years (classes broken into age appropriate groups)

Practices will focus on rules of the game, basic positions, and lots of touches on the ball with shooting. Small sided game play will be included in each practice. Fundamentals of soccer will be taught with numerous fun games. First time players and experienced players are all welcome.

#### Fall 2 Session Only

Northside YMCA

**Y Member:** \$25

**Community Participant:** \$35



## SAVE WITH EARLY BIRD PRICING!

**FALL 1: REGISTER  
BY AUGUST 21**

**FALL 2: REGISTER  
BY OCTOBER 15**



Register online at [ymcamke.org](http://ymcamke.org)



## YOUTH SPORTS

### VOLLEYBALL SKILLS

Ages 12-15 years

This class helps prepare players for the Fall school seasons of volleyball. All players, experienced or new to the sport, will benefit from this class. Skills will focus on developing serving, passing, setting and hitting.

Fall 1 Session Only

Rite-Hite Family YMCA

Thursdays 5:30-6:30pm

Early Bird Pricing:

**Y Member:** \$45

**Community Participant:** \$60

Open Registration Pricing:

**Y Member:** \$50

**Community Participant:** \$65

### DEVELOPMENTAL VOLLEYBALL LEAGUE

Ages 12-15 years -U10-U14 League

The main goal of our volleyball league is to encourage participants to have fun and to develop their volleyball skills. Teams will practice one night week and play games on the week-ends against other YMCA Volleyball teams in Southeastern Wisconsin. The season ends with a league finale tournament.

Practices start in January and the league runs through March.

Fall 1 Session Only

Rite-Hite Family YMCA

Early Bird Pricing (by December 1, 2018):

\$100/player

Open Registration Pricing:

\$120/player

Pre-Season Skills Clinic will be offered at the Rite-Hite Family YMCA.



# SAVE THE DATE

## 22nd ANNUAL DR. MARTIN LUTHER KING, JR. CELEBRATION BREAKFAST

Monday, January 21, 2019 • 7-9 a.m.  
Italian Community Center







## ADAPTIVE



### GAINING CONFIDENCE

**The YMCA of Metropolitan Milwaukee recognizes the need for high-quality adaptive programming which helps people gain confidence, promote independence, socialize and work with others, as well as nurture a healthy and active lifestyle. All programs are led by qualified, trained individuals who help promote a safe, friendly, and supportive environment.**

#### MIRACLE LEAGUE OF MILWAUKEE

Ages 4-19 years

The Miracle League believes everyone deserves the chance to play baseball. The league allows all children to play organized baseball, regardless of ability. Kids with special-needs dress in uniforms, make plays in the field and round the bases, just like their peers in standard little leagues.

Miracle League baseball is played on a custom-designed field featuring a cushioned, rubberized, completely flat surface to prevent injuries and allow access for the visually impaired and those in wheelchairs. All areas of the field, including the dugouts and restrooms, are universally accessible.

All players have a one-on-one "Buddy" to assist them on and off the field; parents and caregivers get to enjoy the game from the stands.

Programs offered in spring and summer.

Contact us at 414-357-2805 for more information.

Northwest Early  
Childhood Education Center



#### TOPSOCCER

TOPSoccer is a community-based training and team placement program for young athletes with disabilities. The program is designed to bring the opportunity of learning and playing soccer to any boy or girl, who has a mental or physical disability. Players will learn the basics of soccer and participate in small sided game play. Buddies will be assigned to assist players as needed.

Program will be offered October through December.

Fee: FREE but registration is required

For more information contact us at 414-357-2811.







# ADAPTIVE

## ADAPTIVE GYMNASTICS

Ages 3–5 years (If your child falls outside of this age range, please contact us!)

Join us as we explore the Gymnastics Center while working to increase strength, balance, coordination, and self-confidence. We will run, jump, swing, and roll in our safe environment. Stations will be tailored to fit the needs of each child.

For more information, contact the Gymnastics Department at [aschmidt@ymcamke.org](mailto:aschmidt@ymcamke.org) or 414-357-2828.

YMCA Gymnastics Center

Early Bird Pricing:

**Y Member:** \$75

**Community Participant:** \$105

Open Registration Pricing:

**Y Member:** \$80

**Community Participant:** \$110

## EXERCISE FOR PEOPLE WITH PARKINSON'S

This class is designed to help adults of all ages maintain an active lifestyle while focusing on cardiovascular conditioning, flexibility and balance. This class includes 30 minutes of group exercise in a studio under the leadership of an Occupational Therapist and/or Physical Therapist, followed by a half hour in the Wellness Center on the treadmills. Groups are offered at the Rite-Hite Family YMCA.

**Y Member:** \$50

**Community Participant:** \$73/month

\*Note: This is a group based class, those needing one on one assistance should bring an aid.

## PRIVATE SWIMMING LESSONS

**Northside YMCA and Rite-Hite Family YMCA**

Ages 3 years – older adults

Personalized one-on-one instruction for individuals looking to get to the next swimming level, improve technique or get ready for a Triathlon/Iron Man competition. Your instructor will work at your pace toward your goals. Please contact the Aquatics Department directly to schedule your lessons.

Four 30-minute lessons

**Y Member:** \$100

**Community Participant:** \$150

## SEMI-PRIVATE SWIMMING LESSONS

**Northside YMCA and Rite-Hite Family YMCA**

Ages 3+ years

Semi Private lessons provide personalized instruction for two individuals. Your instructor will work with you and one additional friend at your pace and toward your goals. Lessons are offered in packages of four 30 minute lessons. Please contact the Aquatics Department directly to schedule your lessons.

Four 30-minute lessons

**Y Member:** \$120/pair

**Community Participant:** \$180/pair

## PERSONAL TRAINING

Every day, people join the Y, motivated to get healthier. But sometimes they need a little extra help and support to reach that goal. Our personal training focuses on an approach that is safe, efficient, easy-to-follow and helps you stay motivated. Whatever your goal, our expert personal trainers provide plans, coaching and motivation to help you succeed.

### Individual Training Packages and Fees

60-minute individual Training Sessions

1 session – \$60

6 sessions – \$300

30-minute individual Training Sessions

4 sessions – \$120

8 sessions – \$225

12 sessions – \$300

### Partner Training Packages and Fees

60-minute Partner Training Sessions

6 sessions – \$180 per person

8 sessions – \$225 per person

12 sessions – \$325 per person

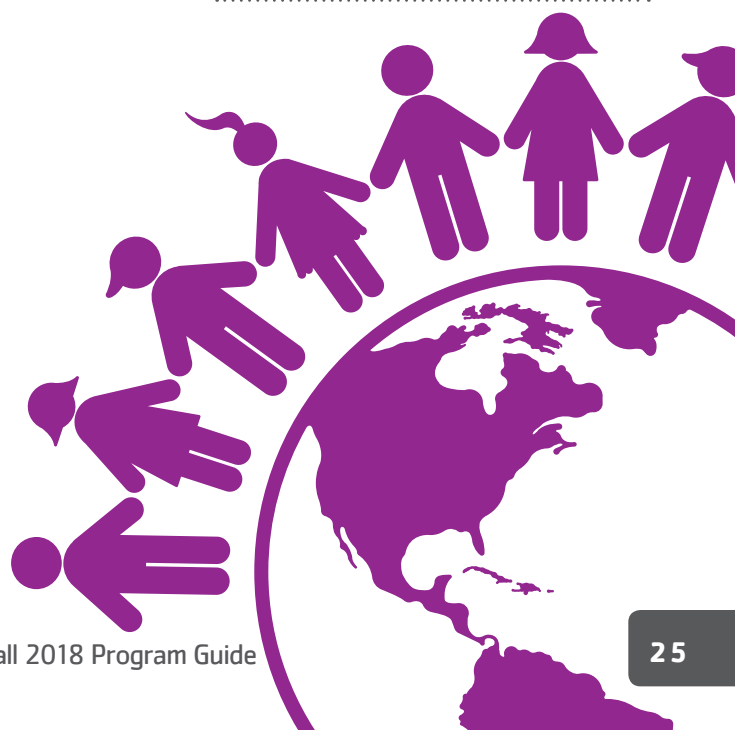
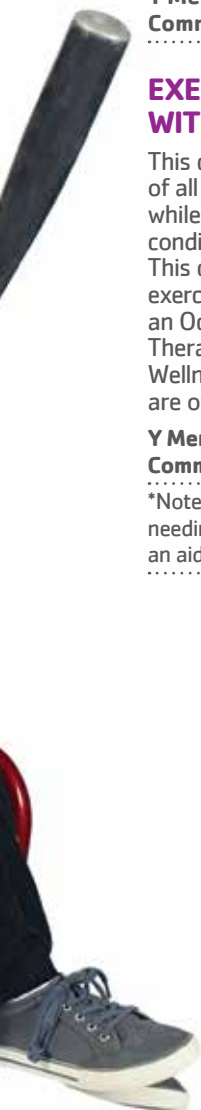
30-minute Partner Training Sessions

12 sessions – \$180 per person

### Team Training Packages and Fees

60-minute Team Training Sessions  
(3–4 people)

4 sessions – \$100 per person





## TEEN/TWEEN PROGRAMS



## FUTURE LEADERS

The YMCA is the perfect place for your tween or teen. From lifeguarding to sports programs, to YMCA Achievers, youth can learn values and life-long skills that can help shape their adulthood.

## BASKETBALL

### CO-ED BASKETBALL AT NORTHSIDE YMCA

Ages 4-12 years

Practices will focus on dribbling, passing, shooting, defense and basic rules of the game. Sessions may lead up to game play.

Schedules will be available after registration is complete.

Fall 1 and Fall 2 Sessions

**Y Member:** \$30

**Community Participant:** \$40

### GIRLS BASKETBALL SKILLS AT NORTHSIDE YMCA

Ages 5-12 years

Practices will focus on dribbling, passing, shooting, defense and basic rules of the game. Sessions may lead up to game play.

Fall 1 and Fall 2 Sessions

**Y Member:** \$30

**Community Participant:** \$40

## SCOUT BADGES

Contact us about completing your scout badges at the YMCA. We can work with you on badges, group activities or ceremonies.

For more information contact:

Rite-Hite Family YMCA at 414-354-9622

OR

Northside YMCA at 414-374-9434

## SWIMMING

### PRE-TEEN/TEEN SWIMMING LESSONS

5th grade – 16 years

This group swim lesson provides a comfortable environment for teens to learn to swim by encouraging them to set personal goals and achieve them. A certified instructor will work with each participant's current skill level and help them improve. All skill levels welcome.

**Prerequisite:** None.

Northside YMCA Aquatics Dept.  
414-374-9434

Rite-Hite Family YMCA Aquatics Dept.  
414-357-2834

The YMCA of Metropolitan Milwaukee offers a variety of exciting programs for tweens and teens. Please visit the following sections and pages of this program guide to view additional offerings for your tweens and teens:

Young Achievers program for middle school students pages 14-15

Before/After School Care pages 10-11

Gymnastics pages 28-32

Safety Training Programs page 45

Youth Sports pages 21-23





# DANCE CLASSES



## IT'S A GROOVE THING

Dance classes at the Y are designed to enhance fine and gross motor skills, cultivate creativity and social development, all while your child is having fun. Children will jump, spin and hop their way to fun with dance classes at the Y.

### MINI HIP HOPPERS

Ages 2-5 years

Our Mini Hip Hoppers class is full of rhythm, body awareness, simple choreography and high energy craziness all set to cool funky age appropriate music. All participants should wear comfortable clothes and athletic shoes.

Fall 1 and Fall 2 Sessions

Rite-Hite Family YMCA

Mondays 6:15-7:00pm

Early Bird Pricing:

**Y Member:** \$48

**Community Participant:** \$76

Open Registration Pricing:

**Y Member:** \$53

**Community Participant:** \$81

If registration occurs after the session starts, a \$5 late fee will be assessed.

### HIP HOP

Ages 6+ years

Our Hip Hop Class is full of rhythm, high energy, and fun choreography. This class teaches elements of Jazz and Modern for the fundamental basics to learn the Hip Hop style of dance. Increase flexibility, strength and body awareness and coordination while dancing to popular contemporary music.

Fall 1 and Fall 2 Sessions

Rite-Hite Family YMCA

Mondays 7:05-7:50pm

Early Bird Pricing:

**Y Member:** \$48

**Community Participant:** \$76

Open Registration Pricing:

**Y Member:** \$53

**Community Participant:** \$81

If registration occurs after the session starts, a \$5 late fee will be assessed.





# GYMNASTICS



## TAKING THE GOLD

One of the greatest things we can give a child is self confidence. Gymnastics, with the many small challenges of each class, builds confidence in every athlete. Forget the cartwheels, building a self confident child can impact all of the other activities in their lives.

### IS YOUR CHILD NEW TO OUR GYMNASTICS PROGRAM?

1. If your child is crawling-3 years, register by age for Parent/Child, Mini Movers, or Teddy Tumblers.
2. If your child is 3 years old and has a strong sense of following directions or is 4 years old and is not yet attending Kindergarten at school, register for Preschool Gymnastics.
3. If your child is 4-6 years old and is currently attending Kindergarten at school, register for the Kindergarten class.
4. If your daughter is 6 years or older and has never taken a gymnastics class before, register for Gymnastics 1.
5. If your son is 6 years or older, register for Boys' Gymnastics.
6. If your child is transferring from another program or you are not sure of their ability, contact Alex Schmidt at [aschmidt@ymcamke.org](mailto:aschmidt@ymcamke.org) or 414-357-2828 for a skill evaluation.
7. Participants should wear athletic clothing, have hair secured away from their face, and bring their own water bottle.

### PARENT/CHILD GYMNASTICS

Crawling – 2 years

This class is led by an instructor but each child is assisted by a parent/guardian. Join other families as we develop balance, coordination, fine and gross motor skills and socialization.

#### Rite-Hite Family YMCA

Early Bird Pricing:

**Y Member:** \$40

**Community Participant:** \$50

Open Registration Pricing:

**Y Member:** \$45

**Community Participant:** \$55

If registration occurs after the session starts, a \$5 late fee will be assessed.

### MINI MOVERS

Ages 2-2½ years

Mini Movers run, jump, roll, and climb. Children learn to follow simple instructions and control their bodies as they explore our safe and fun surroundings.

#### Rite-Hite Family YMCA

Early Bird Pricing:

**Y Member:** \$45

**Community Participant:** \$57

Open Registration Pricing:

**Y Member:** \$50

**Community Participant:** \$62

If registration occurs after the session starts, a \$5 late fee will be assessed.





# GYMNASTICS

## TEDDY TUMBLERS

Ages 2½–3 years

In Teddy Tumblers, children will be exposed to different gymnastics stations and will be encouraged to explore them at their own pace while following simple instructions. Balance, coordination, and body control are emphasized in this offering.

### Rite-Hite Family YMCA

Early Bird Pricing:

**Y Member:** \$45

**Community Participant:** \$57

Open Registration Pricing:

**Y Member:** \$50

**Community Participant:** \$62

If registration occurs after the session starts, a \$5 late fee will be assessed.

## PRESCHOOL GYMNASTICS

Ages 3–4 years

Participants will practice basic gymnastics skills as they navigate through a variety of stretches, warm up activities, and circuits. This class makes exercise fun and helps children prepare for a school environment.

### Rite-Hite Family YMCA

Early Bird Pricing:

**Y Member:** \$67

**Community Participant:** \$95

Open Registration Pricing:

**Y Member:** \$72

**Community Participant:** \$100

### YMCA Gymnastics Center

Early Bird Pricing:

**Y Member:** \$75

**Community Participant:** \$105

Open Registration Pricing:

**Y Member:** \$80

**Community Participant:** \$110

If registration occurs after the session starts, a \$5 late fee will be assessed.

**SAVE WITH EARLY  
BIRD PRICING!**

**FALL 1: REGISTER  
BY AUGUST 21**

**FALL 2: REGISTER  
BY OCTOBER 15**

## KINDERGARTEN GYMNASTICS

Ages 4½–5½ years

All participants must be enrolled in 4K or 5K. Kindergartners continue to progress through the sport of gymnastics doing rolls, cartwheels, handstands, and swinging on bars to prepare them for transition to our progressive program.

### Rite-Hite Family YMCA and YMCA Gymnastics Center

Early Bird Pricing:

**Y Member:** \$75

**Community Participant:** \$105

Open Registration Pricing:

**Y Member:** \$80

**Community Participant:** \$110

If registration occurs after the session starts, a \$5 late fee will be assessed.





# GYMNASTICS

## PROGRESSIVE GYMNASTICS

Participants in our progressive gymnastics program work on skills to establish a foundation in gymnastics. Classes consist of warm-up, strength training, flexibility and instruction on at least three events per day.

### GIRLS GYMNASTICS I

Ages 6+ years

Little or no gymnastics experience is required. Athletes work on basic gymnastics skills. It generally takes more than one session to progress to Gymnastics II.

YMCA Gymnastics Center

### GIRLS GYMNASTICS II

Ages 7+ years

Prior gymnastics experience and instructor recommendation is required. Participants will need to know how to perform basic skills for each event. It generally takes more than one session to progress to the next level. Athletes must complete a skill evaluation to progress.

YMCA Gymnastics Center

### GIRLS GYMNASTICS III

Ages 7+ years

A gymnast must have a recommendation from an instructor, or a required skill test to participate in this class. A gymnast beginning in this level should have participated in at least three semesters at Gymnastics II in our YMCA program. This advanced gymnastics class will continue to build on gymnastics skills already learned, and introduce more advanced skills on each of the events; vault, bars, beam and floor. There will be continued focus on strength, flexibility and technique while continuing to develop in gymnastics at a higher level.

YMCA Gymnastics Center

### BOYS GYMNASTICS

Ages 6+ years

Boys with all levels of experience are invited to join this class where athletes work on basic gymnastics skills. Participants will receive instruction on floor, vault, high bar, parallel bars, mushroom, and strength/conditioning.

YMCA Gymnastics Center



### OBSTACLE NINJAS

Ages 4-7 years

Do you need a place for your little ninja to burn off some energy? This class will have obstacle courses and physical challenges each week to help children improve strength and endurance in a fun, safe environment.

YMCA Gymnastics Center

### PARKOUR

Ages 8+ years

Parkour is the physical discipline of training to overcome any obstacle in one's path by adapting one's movement to the environment. This class will focus on functional strength, physical conditioning, balance, creativity, control and looking beyond the traditional use of objects.

YMCA Gymnastics Center

### STRENGTH AND TUMBLING

Ages 6+ years

This class is for the athlete or dancer that wants to get stronger and learn the basics of tumbling on a spring floor. Class sizes are small to ensure individual instruction and focus on new skill development.

YMCA Gymnastics Center

## SAVE WITH EARLY BIRD PRICING!

**FALL 1: REGISTER BY AUGUST 21**  
**FALL 2: REGISTER BY OCTOBER 15**

Early Bird Pricing:

**Y Member: \$75**

**Community Participant: \$105**

Open Registration Pricing:

**Y Member: \$80**

**Community Participant: \$110**

If registration occurs after the session starts, a \$5 late fee will be assessed.





# GYMNASTICS

## ENERGY

Ages 4+ years

This invitation only class is for the gymnast who has a desire and motivation to work hard and shows potential for competitive gymnastics. It is a bridge from the progressive classes to our competitive team. In this class, gymnasts will be learning skills required to join our Momentum Gymnastics Team with more focus on conditioning and flexibility. Instructor recommendation is required.

**YMCA Gymnastics Center**

**Y Member:** \$55/month

**Community Participant:** \$75/month

## TWEEN/TEEN GYMNASTICS

Ages 12+

This mixed level class caters to gymnasts who prefer to be in a class with other participants closer to their age. Female gymnasts of all abilities are invited to join this class where instruction will be based on the needs of the registered individuals.

Early Bird Pricing:

**Y Member:** \$75

**Community Participant:** \$105

Open Registration Pricing:

**Y Member:** \$80

**Community Participant:** \$110

If registration occurs after the session starts, a \$5 late fee will be assessed.



## SKILL CLINICS

Ages 6+ years

Come to the Gymnastics Center for additional work on individual events. Skill clinics are great for both beginner and experienced gymnasts as stations are tailored to fit the needs of the registered participants. Coaches will be focusing on each event separately and will not give instruction on all events at each clinic.

Back Tumbling

September 22 1:30-3:00pm

Beam Skills

October 13 1:30-3:00pm

Front Tumbling

November 24 1:30-3:00pm

Bar Skills

December 29 1:30-3:00pm

**Y Member:** \$17/clinic

**Community Participant:** \$20/clinic

For more information please contact

Alex Schmidt at 414-357-2828 or

aschmidt@ymcamke.org.

## ADAPTIVE GYMNASTICS

Ages 3-5 years (If your child falls outside of this age range, please contact us!)

Join us as we explore the Gymnastics Center while working to increase strength, balance, coordination, and self-confidence. We will run, jump, swing, and roll in our safe environment. Stations will be tailored to fit the needs of each child.

For more information, contact the Gymnastics Department at 414-357-2828 or aschmidt@ymcamke.org

**YMCA Gymnastics Center**

Early Bird Pricing:

**Y Member:** \$75

**Community Participant:** \$105

Open Registration Pricing:

**Y Member:** \$80

**Community Participant:** \$110

If registration occurs after the session starts, a \$5 late fee will be assessed.

## SAVE WITH EARLY BIRD PRICING!

**FALL 1: REGISTER BY AUGUST 21**

**FALL 2: REGISTER BY OCTOBER 15**

## HOMESCHOOL GYMNASTICS

Ages 3-15 years

This structured class is open to gymnasts of all levels. Participants will develop gymnastics skills, flexibility and strength. No experience is required.

For more information, contact the Gymnastics Department at 414-357-2828 or aschmidt@ymcamke.org

**YMCA Gymnastics Center**

Early Bird Pricing:

**Y Member:** \$75

**Community Participant:** \$105

Open Registration Pricing:

**Y Member:** \$80

**Community Participant:** \$110

If registration occurs after the session starts, a \$5 late fee will be assessed.

## OPEN GYM AT THE YMCA GYMNASTICS CENTER

Bring your kids for a fun-filled time at the YMCA Gymnastics Center Open Gym. Open gyms are a great opportunity for family fun! Children under the age of 10 must be accompanied by an adult.

Open gyms are only held during program sessions, and will not run during off weeks.

We welcome field trips and parent groups.

Fridays 11:00am-1:00pm

Fridays 6:00-8:00pm

Saturdays 1:30-3:30pm

Pricing: \$5 per participant.

Punch cards must be purchased in advance from the Rite-Hite Family YMCA. No money is handled at the YMCA Gymnastics Center.



# GYMNASTICS

## COMPETITIVE GYMNASTICS

### MOMENTUM GYMNASTICS TEAM

This year-round program offers two to nine hours per week of training depending on level. The team participates in competitions throughout the state within the Wisconsin YMCA Gymnastics System. Our gymnasts have the opportunity to attend the YMCA National Gymnastics Competition each summer! We offer USA Gymnastics Compulsory and Optional Levels. Each gymnast competes as an all-around gymnast, performing routines on floor exercise, balance beam, uneven bars and vault.

Please contact head coach Alex Schmidt at 414-357-2828 or [aschmidt@ymcamke.org](mailto:aschmidt@ymcamke.org) for more information or a skill evaluation.



**MOMENTUM GYMNASTICS TEAM**  
**2017 – 2018**



## YMCA GYMNASTICS CENTER

**6140 W Executive Dr.  
Mequon**

This facility houses the Metro Milwaukee YMCA Momentum competitive gymnastics team, open gym, youth classes, tumbling, and Parkour!

**Please contact the gymnastics department for a skill evaluation or more information.**

\*Note GPS and map apps do not accurately direct you to our location. Please follow the directions below instead:

### **Directions from Mequon Rd.:**

Turn south onto Industrial Dr. (located between Wauwatosa Rd and Cedarburg Rd). Turn left (East) onto Executive Drive. Gymnastics Center is the 4th business in from the entrance.

### **Directions from the Rite-Hite Family YMCA:**

Head north on Hwy 57 (Green Bay Road). Turn left at County Line Rd. Turn right onto Baehr Rd. Take Baehr Rd to the roundabout and turn left. Gymnastics Center is on the left after the second speed bump.





# FAMILY EVENTS



## LASTING MEMORIES

Serving families has always been at the heart of the Y mission. We have a fundamental desire to provide opportunities for every family to build stronger bonds, achieve greater work/life balance and become more engaged with their communities.



Additional family events may be scheduled throughout the year. Please check our website at [ymcamke.org](http://ymcamke.org).

### HALLOWEEN HULLABALOO

Join us for a not-so-scary time at our annual Halloween celebration! Come dressed in your best costume and enjoy a fun filled evening for the entire family. Enjoy fun activities including, arts and crafts, carnival games, a cake walk, trick or treating and much more!

Rite-Hite Family YMCA

6:00–8:00pm

Event date to be announced

**Y Member:** \$5/family

Registration opens TBA

\$10/family after October 13

**Community Participants:** \$10/family

Registration opens TBA

\$15/family after October 13

### HOLIDAY COOKIE HOUSE

Take a break from the holiday rush and enjoy a fun, relaxing day at Camp Minikani decorating cookies and gingerbread houses with friends and family. You supply the creativity and leave the mess to us!

YMCA Camp Minikani

Saturday, December 8

9:00am–1:00pm

For more information, please call  
262-251-9080.

### FESTIVE FRIDAY WITH SANTA

Have a holly, jolly day with Santa at the YMCA. Bring your friends and family and enjoy holiday crafts, face painting, decorate a gingerbread house or Christmas cookies, and minute to win it games. Santa Claus will also be on hand, so be sure to bring your camera, for selfies with Santa.

Rite-Hite Family YMCA

6:00–8:00pm

Event date to be announced

**Y Member:** \$5/family

Registration open date to be announced

\$10/family after December 1

**Community Participants:** \$10/family

Registration open date to be announced

\$15/family after December 1



### BIRTHDAY PARTIES AT THE YMCA

Birthday parties are available at the YMCA Gymnastics Center and the Northside YMCA Aquatic Center.

For gymnastics parties contact the gymnastics department at 414-357-2828.

For aquatic parties contact Patricia at  
414-374-9434.

### OPEN GYM AT THE GYMNASTICS CENTER

Bring your kids for a fun-filled time at the YMCA Gymnastics Center Open Gym. Open gyms are a great opportunity for family fun! Children under the age of 10 must be accompanied by an adult.

We welcome field trips and parent groups.

Fridays 11:00am–1:00pm

Fridays 6:00–8:00pm

Saturdays 1:30–3:30pm



# WELLNESS CENTER SERVICES



## REACHING GOALS

The YMCA of Metropolitan Milwaukee is dedicated to helping individuals and families achieve their health and fitness goals. Our Wellness Centers offer state-of-the-art equipment, the latest fitness classes, personal training, weight loss programs and certified, caring staff to assist you.



For more information on personal training and to register for your free personal training consultation contact Carley Hoelzel, Senior Director of Healthy Living, at 414-274-0807, or [choelzel@ymcamke.org](mailto:choelzel@ymcamke.org).

### PERSONAL TRAINING

Every day, people join the Y, motivated to get healthier. Our personal training focuses on an approach that is safe, efficient, easy-to-follow and helps you stay motivated. Whatever your goal, our expert personal trainers provide plans, coaching and motivation to help you succeed.

#### Individual Training Packages and Fees

60-minute individual Training Sessions	
1 session - \$60	
6 sessions - \$300	
30-minute individual Training Sessions	
4 sessions - \$120	
8 sessions - \$225	
12 sessions - \$300	

#### Partner Training Packages and Fees

60-minute Partner Training Sessions	
6 sessions - \$180 per person	
8 sessions - \$225 per person	
12 sessions - \$325 per person	
30-minute Partner Training Sessions	
12 sessions - \$180 per person	

#### Team Training Packages and Fees

60-minute Team Training Sessions (3-4 people)	
4 sessions - \$100 per person	

### SMART START FITNESS

#### Four-week lifestyle and fitness program

During your first appointment you will have your body composition evaluated and meet with a trained coach to assess your goals and create a program. Programs may include: Group exercise classes, recreational sports, aquatics, Free Motion, free weights, a variety of cardio equipment and stretching guidelines.

Each week you will meet with your trained coach to submit your food logs and evaluate the progress of your program.

\$25 for four weeks  
30-60 minute appointments

### FITNESS ORIENTATION

A fitness orientation is great for all new members that are looking to become familiar with the Y. A trained coach will help you navigate through the many resources you can take advantage of at the YMCA.

Free for Y Members

### FITNESS CONSULTATION

All members looking for a refresher can meet with a trained coach that will help you learn to take full advantage of the many resources available to you at the Y. Your trained coach will work with you to create a program to help achieve your wellness goals that involves a variety of activities that fit your schedule.

Sessions may include: Strength training, a variety of cardio equipment, and stretching guidelines.

Free for Y Members

### INBODY TESTING

The InBody provides a quick and easy, non-invasive body analysis that provides essential data for any weight loss and fitness program. After your quick analysis of body composition, you will receive a print out of your measurements.

**Y Member:** \$10

**Community Participant:** \$20

To make an appointment contact the Fitness Center staff at 414-357-2853.



# WELLNESS CENTER SERVICES

## STRENGTH TRAINING 101 AT DOWNTOWN, NORTHSIDE AND RITE-HITE FAMILY YMCA

This 6-week class will help participants learn the basics of weight training while building confidence in the weight room. Class will meet twice a week for one hour.

Early Bird Pricing:

**Y Member:** \$55

**Community Participant:** \$75

Open Registration Pricing:

**Y Member:** \$60

**Community Participant:** \$80

If registration occurs after the session starts, a \$5 late fee will be assessed.

4 person minimum per session

## STRIDE AND STRENGTH AT THE NORTHSIDE AND RITE-HITE FAMILY YMCA

A Wellness Coach will teach you to use the Wellness Center in the most effective and easy to understand way along with providing support to help you reach your goals. The 60-minute class will consist of a 30-minute guided cardio machine workout and a 30-minute group strength and flexibility workout. Set goals that will keep you motivated. By the end of the program you will have eight new cardio and four new strength workouts to keep and use!

Early Bird Pricing:

**Y Member:** \$40

**Community Participant:** \$60

Open Registration Pricing:

**Y Member:** \$45

**Community Participant:** \$65

If registration occurs after the session starts, a \$5 late fee will be assessed.

4 person minimum per session

Other times available if group is formed on own.

# WELLNESS CHALLENGE SERIES

## FALL INTO FITNESS WELLNESS CHALLENGE

October 1–November 11

Fall can be a great time to change your workouts and try something new. It's the perfect time to take advantage of bringing your workout indoors with Fall Into Fitness. Sign up individually or with a friend. You will be set up on a team led by a Y staff member or a Y member that will fit your exercise schedule during this fun 6-week program. Show us your team spirit this fall at the Y!

Early Bird Pricing:

**Y Member:** \$25

**Community Participant:** \$90

Open Registration Pricing:

**Y Member:** \$30

**Community Participant:** \$95

If registration occurs after the session starts, a \$5 late fee will be assessed.





# SMALL GROUP TRAINING (S.G.T.)



## PUSHING LIMITS

Group exercise provides an opportunity to workout with others in a welcoming, motivating environment that produces results. No matter what age or fitness level you are at, we have classes for you!

### REAL FITNESS, REAL RESULTS, FOR REAL LIFE.

Small group training is a higher level of results-driven workouts designed to skyrocket your fitness performance. Smaller class sizes allow you to enjoy the benefits of individualized attention, without sacrificing the camaraderie you find in group workouts. The classes are small but the energy is high!

### CONNEXUS XTRICITY

Enter the zone where cross training and fitness electricity intersect to create shocking new exercise dynamics!

The YMCA of Metropolitan Milwaukee is the first in the world to introduce programming on the Matrix ConneXus Perimeter System.

Be one of the first to experience the newest innovation in cross circuit and fitness boxing programming, which is scientifically engineered to create diversity in your training regimen while increasing your athletic performance.



### X-CIRCUIT TRAINING (CROSS CIRCUITING TRAINING)

#### Parallels

Traditional interval circuit training for results-based fitness. Clear and focused coaching guides participants as they toggle their training between timed and quantified circuit rounds - perfect for those interested in ramping up to high and variable intensity training.

#### Circuit Breaker

Intense multi-layered progressive training dynamics - Each class is uniquely different. Explosive power and speed training modules to barrel through your plateaus and increase overall level of fitness. Expect to be challenged to your physical limits. This ADVANCED Performance module is perfect for those wanting to build on their level of fitness.

#### Y Member:

1 session/week: \$25;  
2 sessions/week: \$40

#### Community Participant:

1 session/week: \$40;  
2 sessions/week: \$60

### IMPACT BASED FITNESS BOXING

#### strYkeForce!

Traditional and advanced boxing-specific calisthenics, sparring, shadow, and heavy bag drills that build multiple striking techniques. Participants will be striking (punching) and spotting (holding) a heavy bag - a perfect way to diversify your workout routine.

#### Y Member:

1 session/week: \$25;  
2 sessions/week: \$40

#### Community Participant:

1 session/week: \$40;  
2 sessions/week: \$60

All Matrix ConneXus sessions run monthly.





# SMALL GROUP TRAINING (S.G.T.)

## TRX® SUSPENSION TRAINING GROUP EXERCISE MODULES:

Invented by a Navy SEAL, TRX® is being utilized by professional trainers all around the country to provide a results driven, full body conditioning experience like no other. The TRX® suspension trainer was designed to facilitate an enormous range of body weight training movements through the symmetry of multiple muscle groups. Every suspension training exercise builds true functional strength and improves flexibility, balance and core stability all at once. Suspension training workouts will benefit anyone who wants to safely and rapidly improve their fitness ability at any level.



### TRX® CORE

30 minutes

TRX® is finally here! This extreme core workout is designed to offer you a mix of strength, core stability, and balance exercises using your own bodyweight. Meets twice a week to give you the ultimate challenge your core has been waiting for! Great for all levels, ages and abilities. This module will help prepare participants for TRX® Cardio Circuit and TRX® Fusion.

Four-week session. Classes run on a monthly basis.

#### Y Member:

1 session/week: \$25;  
2 sessions/week: \$40

#### Community Participant:

1 session/week: \$40;  
2 sessions/week: \$60

### TRX® INTERVAL CIRCUIT

35 minutes

Cardio Circuit offers an interval mix of cardio, strength, and TRX® full body conditioning packed into one powerful training session. Participants will be guided through time based drills that will guide them on and off of the suspension trainers. The clock doesn't stop in this 30-minute heart racing interval training session.

Four-week session. Classes run on a monthly basis.

#### Y Member:

1 session/week: \$25;  
2 sessions/week: \$40

#### Community Participant:

1 session/week: \$40;  
2 sessions/week: \$60



### TRX® STRENGTH ZONE

30 minutes

This add-on class is all about getting you stronger for all other TRX® classes. It is designed to be more about the quality and degree of difficulty of the exercises than the speed and cardio. Each week has a different focus on a different body part or exercise.

Four-week session. Classes run on a monthly basis.

#### Y Member:

1 session/week: \$25;  
2 sessions/week: \$40

#### Community Participant:

1 session/week: \$40;  
2 sessions/week: \$60

### TRX® ADVANCED PERFORMANCE

45 minutes

The most advanced TRX® module combines the cardio endurance of circuit and the strength of core to provide the next level of athletic performance. This class offers a mix of cardio, strength, and TRX® full body conditioning while marrying together different equipment with the suspension trainer. This may include the bosu ball, medicine ball, free weights, etc. Dynamic movements and aggressively stacked exercise combinations are designed to take your fitness to new heights.

Four-week session. Classes run on a monthly basis.

#### Y Member:

1 session/week: \$25;  
2 sessions/week: \$40

#### Community Participant:

1 session/week: \$40;  
2 sessions/week: \$60



# SMALL GROUP TRAINING (S.G.T.)

---

## TOTAL GYM

---

**TOTAL FITNESS, TOTAL PERFORMANCE,  
TOTAL SUCCESS.**

The YMCA of Metropolitan Milwaukee is again at the forefront of the group fitness industry by **EXCLUSIVELY** delivering the unique Total Gym.

Total Gym allows anyone, no matter what your age or fitness level, to efficiently and effectively workout. Total Gym is an incline plane training device that offers a large variety of unique exercises that use an individual's own body weight as resistance. Equipment is adjustable to match your strength, mobility, body awareness and physical challenges. The Y's certified fitness professionals will guide you through different incline training modules geared to improve strength, flexibility, balance, power and endurance.

## TOTAL GYM FOUNDATIONS (LEVEL 1 AND 2)

**45 minutes**

This class is the perfect starting point for all fitness levels. Participants will focus on mastering techniques and breaking through the plateau of traditional workout routines. Exercises focus on muscle control, isolation, full body engagement, core strength and stability, while decreasing the stress joints.

**Y Member:**

1 session/week: \$25;  
2 sessions/week: \$40

---

**Community Participant:**

1 session/week: \$40;  
2 sessions/week: \$60

---

## TOTAL GYM CORE MOTION

**45 minutes**

Train your body to perform like a machine as your core becomes stronger, leaner and more powerful. Participants will be guided through multiple exercises that will focus on proper alignment, speed, power, endurance and core performance. Unique drill sets and training techniques will help you increase your physical performance in exercise, athletics, work and leisure time activities.

**Y Member:**

1 session/week: \$25;  
2 sessions/week: \$40

---

**Community Participant:**

1 session/week: \$40;  
2 sessions/week: \$60

---

## TOTAL GYM INTERVAL CIRCUIT

**45 minutes**

The next level of interval training is here with this hard-hitting cardio based training platform! Participants will utilize the Total Gym to move through a variety of speed and power intervals, moving on and off the equipment to maximize the cross training benefits of this workout. Prior knowledge of Total Gym techniques is suggested.

**Y Member:**

1 session/week: \$25;  
2 sessions/week: \$40

---

**Community Participant:**

1 session/week: \$40;  
2 sessions/week: \$60

---

## TOTAL GYM GOLF

**45 minutes**

Up your game, lower your score and own the green with this new sports specific training program! This program is designed specifically for golfers to get fit with corrective and performance enhancing exercise strategies. Participants will work through drill sets that are designed to improve head speed, bolster driving distance and reduce the chance of lower-back injuries.

**Y Member:**

1 session/week: \$25;  
2 sessions/week: \$40

---

**Community Participant:**

1 session/week: \$40;  
2 sessions/week: \$60

---

**All Total Gym sessions run monthly.**



# GROUP EXERCISE

## CARDIO CLASSES:

### BODYSTEP™

BODYSTEP™ is the energizing step workout that makes you feel liberated and alive. Using a height-adjustable step and simple movements on, over and around the step you get huge motivation from sing-a-long music and approachable instructors. Cardio blocks push fat burning systems into high gear followed by muscle conditioning tracks that shape and tone your body.

### BODYCOMBAT™

BODYCOMBAT™ is the empowering cardio workout where you are totally unleashed. This fiercely energetic program is inspired by mixed martial arts and draws from a wide array of disciplines such as karate, boxing, taekwondo, tai chi and muay thai. Experience the driving music and powerful role model instructors which make BODYCOMBAT™ the world's most popular martial arts group fitness class.

### STEP AEROBICS

Step your fitness up to new heights with this beat driven workout that will have you moving up and off of an adjustable bench. Combinations of moves will be introduced in this class to raise your heart rate as you fly across, around and over the bench. You can control the level of intensity by the height of your bench and the size of your movements.

### strYke

Fitness can be a battle, it's time to get into the fight! Jump in and punch, strike, kick and elbow your way to a fitter you. This cardio kickboxing class uses multiple international combat disciplines that will improve your coordination and also target muscles in a different way than your normal workout, helping sculpt your body during this 45-minute workout.

Group exercise classes are offered year round and are usually included in your membership, although, special programs, events and classes will incur an additional charge. Most classes are open to community participants on a space availability basis. Due to capacity issues (limited equipment or space) during peak times, certain classes will require a reservation to secure your spot. Please check with the membership desk and/or group exercise coordinator for dates, times and locations.

## Y-CARDIO FUNK

We'll provide the dance floor, you set it on fire. This fitness-based dance class consists of a combination of low and high impact traditional aerobic movements performed in a dynamic dance style. A great and rewarding workout where you'll see cardio benefits. Have a great time while you "get your funk on!"

## Y-CYCLE

It's time to chart a new course on your fitness journey! Instructors will lead the class on a motivating path through mixed terrain, hills, flats, mountain peaks, time trials, and intervals. An amazing adventure guided to the rhythm of powerful and engaging music. You can increase or decrease the tension on your fly wheel to control the intensity of the workout.

## Y-FUSE

The original YMCA of Metropolitan Milwaukee branded fitness class that set the stage for all of the unique life-changing group fitness experiences that you can only get at the YMCA of Metropolitan Milwaukee's Ys. Touted as the most challenging cardio based fitness class in our association – Y-Fuse is an exciting, innovative, full-body cardio class that utilizes sports-inspired drills to get the heart rate pumping. Fast-paced, effective workout in a short time block. Though this class offers advanced and dynamic movement patterns, participants are in control of their impact levers which makes this challenging class achievable for all levels.

## ZUMBA®

Ditch the workout, join the party! The class that started the dance-fitness revolution and changed the way we look at a "workout" forever. Zumba® is a dynamic, danced-based class set to the fusion of Latin and international music featuring aerobic fitness (interval training). Dance sneakers or shoes that allow for pivoting are recommended.

## STRENGTH CLASSES:

### BODYPUMP™

BODYPUMP™, the original LES MILLS™ barbell class, will sculpt, tone and strengthen your entire body, fast! Great bodies aren't born, they are transformed, using the proven BODYPUMP™ formula: THE REP EFFECT™ a breakthrough in resistance workout training. Focusing on low weight loads and high repetition movements, you'll burn fat, gain strength and quickly produce lean body muscle conditioning. BODYPUMP™ is one of the world's fastest ways to get in shape as it challenges all of your major muscle groups while you squat, press, lift and curl.

## Y-CHISEL

Let's sculpt a better you! This class is designed to strengthen various muscle groups using hand weights, resistance bands, and stabilization techniques. A full body workout that builds bone density and reshapes muscles to increase efficiency in daily activities.

## Y-CORE

Your core is the epicenter of all movement in your body. This class is designed to engage, build, strengthen, define and tone all the muscles of your core. Core strength and power developed in this class will increase your physical performance in work, athletic and leisure activities. Exercises will focus on all the muscles of the abdominals, lower back and engage the hip flexors. This foundational class is designed to compliment and enhance the other fitness activities that you perform. It is recommended that you layer this class after or within your training program.



# GROUP EXERCISE

## Y-CORE PERFORMANCE

Are you ready to expect more from your core? Welcome to your next level in core training. Building on the techniques integrated in Y-Core, participants will recruit and integrate a variety of muscle groups and energy systems to train and challenge their core for maximum performance. Class is designed to increase core control, muscle reaction, power and explosiveness through deliberate and dynamic training intervals. This class is perfect for off-season sport and athletic training.

**Y Member:** \$25/session unlimited  
**Community Participant:** \$40/session unlimited

(No additional charge for class if participant is registered for any fee-based group exercise class)

## Y-BLITZ

The ultimate cross training workout challenge is here! This class is 35 minutes of all out intensity. It will challenge anyone's fitness level and enhance your physical performance no matter where you are physically. Each class is completely different and is designed around different equipment and sports-inspired cross training.

**Y Member:** \$25/session unlimited  
**Community Participant:** \$40/session unlimited

## COMBINATION CLASSES:

### (Cardio, Strength and Flexibility)

## CARDIO FUSION

This high-energy, full body training class combines athletic aerobic movement with strength and stabilization exercises. Modifications will be demonstrated.

## YC3

This three-tier total body workout will knock your socks off. Participants will work through a combination of exercises encompassing cardio, conditioning, and core. Class will use different equipment and give a great full body challenge. Great for all levels!

## KETTLE BELL CLASSES:

### Y-KETTLE BELL FOUNDATIONS

Master kettle bell technique and form in this class that focuses on setting up the basic moves of kettle bell momentum training. This is a low impact class that delivers results to those interested in strength building, fat loss, muscular endurance, and a fun new workout.

### Y-KETTLE BELL GX

This is the next step in kettle bell training. Learn the technique of new moves including swinging two bells at once. Form is assumed so the time is shortened to increase the intensity.

### Y-KETTLE BELL INTERVAL CIRCUIT

This cardio focused kettle bell class will pair basic technique with high intensity cardio intervals. This class will move back and forth between using the bell and bodyweight exercises to give you a great endurance challenge. This class is great for all levels. Unlimited classes for month. Four-week session. Classes run on a monthly basis. Attendance to this class is included when participants register for any Y-Kettle Bell module.

## BOOT CAMPS:

### Y-BASIC TRAINING CAMP

### Y-INDOOR/Y-OUTDOOR BOOT CAMP

Join us indoors or outside for a four week session of intense workouts that will skyrocket your level of fitness and change your body composition. Boot camp is designed to help you get into the best shape of your life. Our talented, experienced and certified instructors will coach you through a variety of drills, stations and experiences that will change and expand your level of fitness. New exercises and new terrain are guaranteed to produce awesome results. Class meets 45 minutes, three times a week during the monthly sessions.

Indoor sessions run: January through April and October through December

Outdoor sessions run: May through September

**Y Member:** \$40  
**Community Participant:** \$79

### Y-FUNCTIONAL FIT CAMP

How functional is your fitness? Y-Indoor boot camp meets assisted functional fitness training. TRX® suspension training and Y-Kettle Bell Momentum training are incorporated to add the next challenge level to your workouts. This class will improve your balance, core stability, endurance, and functional strength for everyday tasks. Class meets 45 minutes, three times a week during the monthly sessions.

**Y Member:** \$40  
**Community Participant:** \$79

## RELAXATION, STRETCH AND STRENGTH FLEXIBILITY CLASSES:

### BODYFLOW™

BODYFLOW™ is a Yoga, Tai Chi, Pilates workout that builds flexibility and strength and leaves you feeling centered and calm. Controlled breathing, concentration and a carefully structured series of stretches, moves and poses to music create a holistic workout that brings the body into a state of harmony and balance.





## GROUP EXERCISE

### TAI CHI

Part martial art, part exercise program and part meditation. Tai Chi, when practiced regularly, can increase flexibility, build strength, improve balance and coordination, relieve stress and enhance concentration.

### YOGA

All body types and skill levels are encouraged to participate. Safe and gentle, yet challenging postures encourage stronger muscles and bones, while simple relaxation techniques release tension from the mind and body.

### Y-STRETCH FLOW

The instructor will help you master the skills of controlled breathing and focus, while leading you through a carefully structured series of stretches, moves and poses for a holistic workout that brings the body into a state of harmony and balance. Class is suitable for all fitness levels.

### PILATES

Building on the principles of Joseph Pilates, the exercises will help you develop a strong “core” or center of your body. Pilates will elongate and strengthen your muscles and improve flexibility and joint mobility.

### VINYASA YOGA

Vinyasa is a discipline that utilizes unique postures and breathing techniques. This type of yoga is designed to help you gain balance and flexibility as you flow through movements. The continuous symmetry from one pose to another creates an added cardiovascular benefit, not present in most traditional yoga forms.



## WORKPLACE WELLNESS

### You know the Y, but does your employer?

When you come to the Y, you are taking an active role in improving and maintaining your health. Whether it's a yoga class, a swim in the pool, a walk around the track or using equipment in the fitness center, it's all about staying active and healthy.

Your employer may be able to help! The Y partners with companies to support your health and wellbeing at work. Your company may already be working with the Y to provide a monthly membership discount. If a company chooses to contribute to their employees' monthly membership dues, **THE Y WILL MATCH 50% OF THE SUBSIDY** up to \$10 per month.

Or another option includes **THE Y COMING ONSITE TO YOUR WORKPLACE**. Customized programming includes: Group Exercise Classes, Fitness Challenges, Cooking Demonstrations, Stress Management and Lunch N' Learns to motivate and keep you and your colleagues on track.

**IT'S EASY AND FREE TO BE A WORKPLACE WELLNESS PARTNER.** First, ask your employer if they offer workplace wellness programming or discounts or if benefits are offered through your insurance carrier. Then, have your company representative call our workplace wellness team at **414-274-0806** or email **VKARWACKI@YMCAMKE.ORG**.



# HEALTHY LIVING



## STRENGTH & SUPPORT

Healthy Living programs at the Y go beyond physical activity, to focus on additional lifestyle areas that enhance health and well-being in a positive, supportive and accepting small group environment. To provide the highest level of quality, most of our Healthy Living programs have been developed in collaboration with a variety of national and local health care, academic and community partners.



### LIVESTRONG® AT THE YMCA

(Adult cancer survivors)

LIVESTRONG at the YMCA is a 12-week small group exercise program designed for cancer survivors who have become de-conditioned or chronically fatigued as a result of their treatment or disease. While the main goal is to enhance physical functioning (flexibility, strength and endurance) additional goals include reducing the severity of treatment side effects, preventing unwanted weight changes, improving energy levels and boosting self-esteem. This program is a collaboration of the Y and the LIVESTRONG Foundation.

Mid-day and evening classes available.

**Y Member:** FREE

**Community Participant:** FREE

### EXERCISE FOR PEOPLE WITH PARKINSON'S

This class is designed to help adults of all ages maintain an active lifestyle while focusing on cardiovascular conditioning, flexibility and balance. This class includes 30 minutes of group exercise in a studio under the leadership of an Occupational Therapist and/or Physical Therapist, followed by a half hour in the Wellness Center on the treadmills. Groups are offered at the Rite-Hite Family YMCA.

**Y Member:** \$50

**Community Participant:** \$73/month

\*Note: This is a group based class, those needing one on one assistance should bring an aid.

### NEW!

### MOVING FOR BETTER BALANCE

Moving For Better Balance is a 12-week evidence-based group exercise program developed by researchers at the Oregon Research Institute. The program, based on the principles of Tai Chi, is led by a qualified instructor and teaches eight movements modified especially for falls prevention.

Moving For Better Balance takes place in a safe and supportive group setting and includes two class sessions and two-plus hours of at-home practice per week.

The program works to improve balance, muscle strength, flexibility and mobility to enhance overall physical health, which leads to better functioning in daily activities. Participation in the program may also result in better mental health, reduced stress, improved memory and cognition, and increased self-esteem.

In addition to the program's physical benefits, the safe, supportive group setting provides an opportunity for participants to enjoy learning with like-minded adults and find relief from the isolation that can sometimes come from living with limited mobility.

**Y Member:** \$65

**Community Participant:** \$80

For more information on our Healthy Living Programs, contact Carley Hoelzel, Senior Director of Healthy Living, at 414-274-0865, or [mkehealthyliving@ymcamke.org](mailto:mkehealthyliving@ymcamke.org).





# HEALTHY LIVING

## COMING SOON! BLOOD PRESSURE SELF-MONITORING PROGRAM

### Take Action to Improve Heart Health

This evidence-based initiative emphasizes that self-monitoring and tracking can play a significant role in reducing blood pressure and improving quality of life. Participants work with trained Healthy Heart Ambassadors for the duration of the four-month program to take their own blood pressure at least two times per month, attend two monthly consultations and attend monthly nutrition education seminars. Goals include increasing awareness of triggers and teaching better management practices. YMCA Healthy Heart Ambassadors are trained in proper blood pressure measurement and provide participants with blood pressure monitors approved by the American Heart Association.

According to the American Heart Association, nearly 80 million American adults have high blood pressure, and less than half have it under control. High blood pressure is a key, modifiable, risk factor for both heart disease and stroke, which are two of the leading causes of death in the United States. In an effort to address these issues, the Y designed a self-monitoring program.

## ENHANCE® FITNESS

### Modified Moves, Maximum Results

This proven, nationally recognized senior fitness and arthritis management program helps older adults become more active, energized and empowered for independent living. A trained and certified instructor focuses participants on cardiovascular endurance, strength, flexibility and balance in an atmosphere of social interaction to reduce the severity of arthritis symptoms.

Participants set their own goals and never do anything that hurts! Soft, adjustable wrist and ankle weights allow each participant to perform strength training exercises at an appropriate level. We measure success with a personal fitness assessment every four months and track progress over time. At the Y, we also provide a comfortable, welcoming environment where participants can support each other and engage socially, breaking the social isolation that is detrimental to the health of many older adults.



## YMCA'S DIABETES PREVENTION PROGRAM



### CHANGE TODAY FOR A HEALTHIER FUTURE

You can reduce your risk for type 2 diabetes and gain tools for healthy living.

### DID YOU KNOW?

- About 86 million American adults have prediabetes, up from 79 million in 2010.
- People with prediabetes are likely to develop type 2 diabetes within 10 years, unless they take action to prevent or delay the disease.
- Diabetes is a leading cause of heart disease, stroke, blindness, disease and nerve disease

**THE GOOD NEWS...**Lifestyle changes such as eating healthier, increasing physical activity and losing 7% of your weight can prevent or delay development of type 2 diabetes in those at high risk for the disease. With the YMCA's Diabetes Prevention Program, you can work with others in a small group setting to learn how to adopt habits that will improve your overall health and well-being and reduce your risk. The program, which is led by a trained Lifestyle Coach in a classroom setting, is delivered over a 12-month period, beginning with 16 weekly sessions transitioning to bi-weekly then monthly maintenance.





## ACTIVE OLDER ADULTS



## LASTING MEMORIES

**Active Older Adult programming at the Y is vibrant and dynamic with a variety of opportunities to match the interests of members. To help participants stay physically active, there are a wide range of group exercise classes to choose from, including water exercise and SilverSneakers® classes.**

Class availability is based on enrollment. Additional schedule information can be found on our website at [ymcamke.org](http://ymcamke.org).

## SILVERSNEAKERS & ACTIVE OLDER ADULT CLASSES

### PICKLEBALL

Pickleball is a racquet sport that combines elements of badminton, tennis and table tennis. The net is similar to a tennis net but is mounted lower. The game is played with a hard paddle and a whiffle ball. Classes offered year round on our indoor court.

Classes offered monthly  
Rite-Hite Family YMCA

### SENIOR FITNESS

You choose your level of intensity by controlling the size of your movement. You will be led through a variety of low impact, easy to follow exercises to improve cardiovascular fitness, endurance and balance. Some resistance work is included for bone strength to give you a total body workout.

### SILVERSNEAKERS® CLASSIC

The SilverSneakers Program is taught by a certified instructor and focuses on improving strength, flexibility, balance and coordination. Plus, you'll enjoy the great music and camaraderie of your fellow participants.

### SILVERSNEAKERS® CIRCUIT

Combine fun with fitness to increase your cardiovascular and muscle endurance power with a standing circuit workout. Upper body strength work and handheld weights, elastic tubing and balls are alternated with nonimpact aerobics. A chair is offered for support.

### SILVERSNEAKERS™ YOGA STRETCH

Move your whole body through a complete series of seated and standing yoga poses. Chair support is offered to safely perform a variety of postures designed to increase flexibility, balance and range of movement. Restorative breathing exercises and a final relaxation will promote stress reduction and mental clarity.

### ZUMBA GOLD

A lower impact, easy-to-follow, Latin inspired dance fitness party designed for older adults.







# SAFETY TRAINING PROGRAMS



## SAVE A LIFE

**Cost-effective  
training programs  
covering basic First  
Aid through advanced  
life support-CPR for  
the professional.**

All participants of American Safety and Health Institute (ASHI) courses will be able to print their own manuals after the course

### **ASHI CHILD AND BABYSITTING SAFETY (CABS) PROGRAM**

The Child and babysitting safety program provides fundamental information in the business of babysitting, proper supervision, and basic caregiving skills, and responding properly to ill or injured children or infants. This class is geared towards adolescents and is not intended for daycare workers.

### **ASHI BASIC FIRST AID**

(2-year certification)

Participants will learn how to recognize and respond to emergencies and provide First Aid for many types of injuries.

### **ASHI BLS/BASIC LIFE SUPPORT (FORMERLY CPR/AED FOR THE PROFESSIONAL RESCUER) AND EMERGENCY OXYGEN**

(2-year certification)

Basic Life Support is a CPR/AED Course for Professional Rescuers offered by American Safety & Health Institute.

Professional Rescuer level includes two rescuer CPR, use of resuscitation masks, bag-valve mask resuscitators and AED.

### **ASHI BLS/BASIC LIFE SUPPORT (FORMERLY CPR/AED FOR THE PROFESSIONAL RESCUER) and EMERGENCY OXYGEN RECERTIFICATION**

(2-year certification)

Basic Life Support is a CPR/AED Course for Professional Rescuers offered by American Safety & Health Institute.

Participants must be currently certified in BLS, CPRA/AED for the Professional Rescuer, or CPR/AED for Lifeguards.

### **NEED CPR TRAINING AT WORK?**

The Y will come to your business and provide the training for you. Contact Jacob Byrne at [jbyrne@ymcamke.org](mailto:jbyrne@ymcamke.org) for details and pricing.

## AQUATICS TRAINING AND CERTIFICATIONS

### **AMERICAN RED CROSS LIFEGUARD TRAINING**

(Ages 15 & up)

**COURSE INCLUDES:** American Red Cross Lifeguard, First Aid, CPR, AED, Oxygen and Waterfront certifications.

**PRE-REQUISITES:** Swim 300 yards continuously front crawl or breast-stroke, tread water for 2 minutes using only legs, complete a timed swim that includes a 20 yard swim, surface dive to retrieve a 10-pound object from the bottom of the pool, and swim 20 yards on the back holding the object, and exit the pool.

**Y Member:** \$100

**Community Participant:** \$150

### **AMERICAN RED CROSS LIFEGUARD RECERTIFICATION**

Class is designed for current American Red Cross lifeguards. Bring your lifeguard book, mask, and current certification cards. Please review in advance.

**Y Member:** \$75

**Community Participant:** \$100



# YMCA CAMP MINIKANI



## WHERE STORIES BEGIN

**Between two natural lakes on 150 pristine acres, YMCA Camp Minikani is a place where campers canoe and swim; build fires and friendships; try archery and explore the arts. However, camp is much more than a series of activities or a plot of beautiful land. Minikani is a community that is dedicated to inspiring your child's best self.**



As parents we want to give our children every opportunity to grow and develop into the best people they can be. We strive to give them the skills they need to be independent and make good choices. But we can't do it alone. It's the community with whom we surround our kids that makes all the difference. Teachers, pastors, coaches, family and friends create the environment to help us raise good kids.

Summer camp is one of those unique settings that provides positive role models who help shape a child's character. It's an environment where kids from all walks of life come together and learn how to not only get along, but develop deep friendships and mutual respect. Summer camp encourages children to express their

individuality and stretch beyond what they thought possible.

Under the thoughtful guidance of our carefully trained counselors and staff, children become more independent, develop problem-solving skills and learn how to rely on their own decisions. And the bonus? Kids have TONS of fun.

Camp Minikani offerings include Overnight Camp, Day Camp, Equestrian Camp and year-round Equestrian and Environmental Education programming—all just 30 minutes from downtown Milwaukee. Summer camp is one of the greatest gifts you can give your children. We hope you'll consider a week or two of camp this summer.

Registration for summer 2019 will open in September.

Register online at:  
[minikani.campbrainregistration.com](http://minikani.campbrainregistration.com).





# YMCA CAMP MINIKANI

## EXPLORE CAMP ALL YEAR

### CORPORATE RETREATS & CONFERENCES

Camp Minikani is an ideal retreat facility for groups as small as 30 and as large as 295 people. We also offer a large variety of nature and environmental education options for school groups. Camp staff are always happy to customize activities to meet the needs of your group.

- Peaceful location for school field trips, corporate retreats and conferences
- Traditional camp activities
- Ideal setting for team building and wellness
- Meeting space for over 200 people

For more information, contact  
Theresa Schmidt at 262-251-9080 or  
[tschmidt@ymcamke.org](mailto:tschmidt@ymcamke.org).



### EQUESTRIAN PROGRAMMING

At Camp Minikani's Equestrian Center our mission and passion is to help kids not only improve in horsemanship, but build character. Our experienced staff provides kids with the chance to make new friends, gain responsibility and increase self-confidence; all while improving on their horsemanship and riding ability. We live by the YMCA's four core values of caring, honesty, respect and responsibility, while maintaining a safe and friendly atmosphere for your child.

- Group and private lessons for beginner and intermediate riders
- Birthday parties
- Private trail-rides for scout troop and youth groups

For more information, contact Emily  
Lundquist at 262-251-9080 or  
[elundquist@ymcamke.org](mailto:elundquist@ymcamke.org).



### HOLIDAY COOKIE HOUSE

Take a break from the holiday rush and enjoy a fun, relaxing day at Camp Minikani decorating cookies and gingerbread houses with friends and family. You supply the creativity and leave the mess to us!

Saturday, December 8

9 am - 1 pm

For more information, please call 262-251-9080.



For more information about how you can enjoy the  
Spirit of Minikani all year long, visit  
[minikani.org](http://minikani.org) or call 262-251-9080 today!





## SIGN UP FOR EMAIL UPDATES

To receive monthly YMCA eNews, sign up at a membership desk or by visiting [ymcamke.org](http://ymcamke.org).



# LOCATIONS

## BRANCHES

**DOWNTOWN YMCA (1)**  
161 W. Wisconsin Ave.,  
Suite 4000  
Milwaukee, WI 53203  
Phone: 414-291-9622  
Fax: 414-274-6033

**NORTHSIDE YMCA (2)**  
1350 W. North Ave.  
Milwaukee, WI 53205  
Phone: 414-265-9622  
Fax: 414-374-9433

**PARKLAWN YMCA (3)**  
4340 N. 46th St.  
Milwaukee, WI 53216  
Phone: 414-873-9622  
Fax: 414-873-9988

**RITE-HITE FAMILY YMCA (4)**  
9250 N. Green Bay Rd.  
Brown Deer, WI 53209  
Phone: 414-354-9622  
Fax: 414-354-0309

## SPECIALTY CENTER

**YMCA GYMNASTICS CENTER (6)**  
6140 W. Executive Dr.  
Mequon, WI 53092  
Phone: 414-357-2828

## CAMP

**YMCA CAMP MINIKANI (7)**  
875 Amy Belle Rd.  
Hubertus, WI 53033  
Phone: 262-251-9080  
Fax: 262-628-4051

## EARLY CHILDHOOD EDUCATION

**NORTHSIDE YMCA EARLY CHILDHOOD EDUCATION CENTER (2)**  
1350 W. North Ave.  
Milwaukee, WI 53205  
Phone: 414-374-9450

**NORTHWEST EARLY CHILDHOOD EDUCATION CENTER (5)**  
9050 N. Swan Rd.  
Milwaukee, WI 53224  
Phone: 414-357-1920